



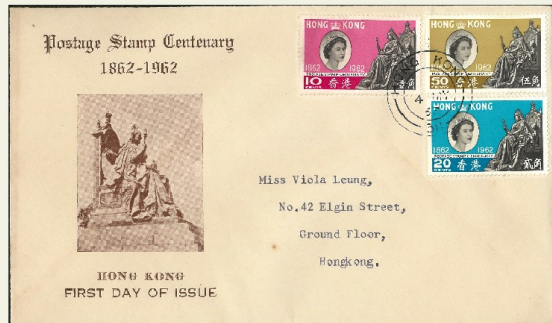
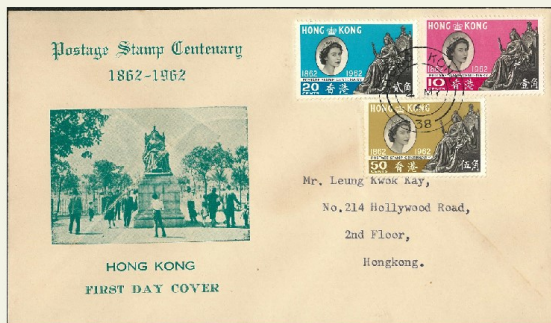
HKPNC



香港郵幣有限公司HKPNC  
 第40期公開拍賣7月28日舉行  
 星期日早上10時正開始  
 微信同步拍賣



Wechat Live Auction



Public Auction #40

40th Public Auction with Wechat live auction



Auction start 10:00am, Sunday 28 July 2024, 7月28日上午10時開始

**FAX OR E-MAIL BIDS SHOULD REACH OUR OFFICE BEFORE  
23:59 27<sup>th</sup> July 2024 and all bids will forward to 28<sup>th</sup> July 2024 public auction.**

Telephone +852 9213 5613 / 9339 2040      E-mail: [info@hkpsc.com](mailto:info@hkpsc.com)

Free download pdf catalogue from [www.hkpsc.com](http://www.hkpsc.com)

Viewing by appointment at our office, please call the numbers below.

Unit 3006, Trendy Centre,  
682 Castle Peak Road,  
Lai Chi Kok, Kowloon,  
Hong Kong

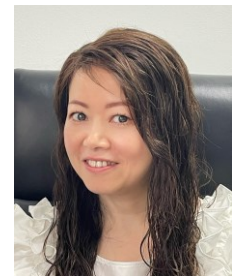


**HKPNC**

香港郵幣有限公司  
Hong Kong Philatelic &  
Numismatic Company Limited



***Winson Ng***  
***Managing Director***



***Erica Chan***  
***Sales Director (HK & Mainland)***



***Calvin Chan***  
***Sales Manager (Mainland)***

## ESTIMATES

Estimates (starting price) have been given for all lots in this auction. They are meant to reflect our idea of the current market value of the item given its scarcity and condition. Lots may sell only more or same (if only one bid) at starting price. No bid is accepted under the starting price.

## BIDDING INCREMENTS (HKD)

100-1,000.....	50
1,000-5,000.....	100
5,000-20,000.....	200
20,000-50,000.....	500
50,000+.....	1,000

Bids outside these increments will be reduced to the nearest increment.

Please view more pictures from [www.hkpnc.com](http://www.hkpnc.com)

E-MAIL BIDS SHOULD REACH OUR OFFICE BEFORE 23:59 27<sup>th</sup> July 2024

## PAYMENT

Payment can be made by transfer direct to the HKPNC account at:

Bank: The Hongkong and Shanghai Banking Corporation Limited

Account Name: Hong Kong P and N Co L

Account Number: 747-223 196-838

Swift Code: **HSBCHKHHHKH**

Bank : Shanghai Commercial Bank

Account Name: Hong Kong Philatelic & Numismatic Co LTD

Account Number: 329-82-22293-1

Swift Code: **SCBKHKHH**

Alternative methods of payment which will enable immediate clearance of purchases included cash, bankers' drafts, personal cheques (order in **Hong Kong Philatelic & Numismatic Co Ltd**)

Purchases will be dispatched as soon as possible upon receipt of your written dispatch instructions and full payment for the lots you have bought.

All bid price in HKD。全部拍賣價以港幣計算  
本拍賣不包郵費，如需郵遞，需另外付費，  
按實際重量或價值計算，最低收費為 30 元港幣。  
EMS 最低收費為 250 元港幣。

本拍賣結束後，翌日下午開始買家可到本店交收。  
如需要郵寄，郵遞期間一切風險由買家自行承擔  
(包括寄失/損壞等)，本公司概不負責。

拍賣佣金按成交價 15% 計算。  
如客戶在發單一個星期內付款，  
則享有佣金優惠，只需要 12%。

詳細圖片可以上 [auction.hkpnc.com](http://auction.hkpnc.com) 瀏覽

28<sup>th</sup> July 2024 10am (lot 1 ~ lot 281)

7 月 28 日上午 10 時開始

HKPNC 公開拍賣現場及微信同步拍賣。  
歡迎大家以微信競投拍賣。請加本人及 Calvin 微信拉  
入拍賣群。



HKPNC-Winson  
中國香港 油尖旺區



Calvin  
中國香港 油尖旺區



**HKPNC 作为收藏品拍卖中介公司，每項拍賣品会以多年工作经验依據來描述，客戶提供之貨品会以當時物品狀況如实反映。**

已成交之貨品如有与描述不符或贗品，請盡快联络本公司職員，本公司会安排第三方認證，如確定描述正確，買家須按照拍賣成交价付款。

如与描述有不符，本公司会联络委託方退货及安排退款。

**\*\* 特別提醒 \*\***

1/ 请在参拍前仔细看预展 (本公司能提供实物图及缺陷描述、图文并茂)，有任何疑问务必请在开拍前询问，拍賣前都可以给清晰大图及仔細图，請留意拍賣中无法再给仔細图。

請参拍的客戶慎重出价，保证所拍既所得。

2/ 本群全品范畴包含：天生纸质点、原厂纸屑齿点、轻微软印软折、隐指纹、草纸票灯下轻微潮点、个别票印刷胶痕、天生油墨、胶道子、透金、老难题金粉票允许极微氧化、允许胶色润度有正常差异、允许沒有造成票面露白或者背胶受损的轻微划痕，拍賣中不一定会注明描述。

上品范畴包含：有黄、背贴、允许轻微下清水、灯下有潮斑、胶不均匀/脱胶、无胶、无破损无破裂薄无人为修补等均为上品，无明显弱齿的不会描述。

每个人对齿的标准不同，所以齿饱满自定，只要是上品个别細節不会一一描述。出价参拍表示认可群規，对品相要求严格极致的藏友，要求绝品的請谨慎出价或者不要参拍。如以上理由退货的，概不接受。

3/ 按拍賣慣例，拍賣中主拍有裁断权。保留編輯中错误之勘误权。

4/ 由于网络卡顿，延迟等问题可能看到的出价先后有所不同，以主拍人或群主截图为准，請大家支持与理解。

**Lot 1 – 281**  
**28<sup>th</sup> July 2024**  
**10am**



## Hong Kong – QV,KE,KGV,KGVI,QE



1



2



3



4



5



6



7

港幣起拍價

- |   |  |                 |
|---|--|-----------------|
| 1 | 1862 QV no watermark 8c mint re-gum. Fine.   | Start bid 500   |
| 2 | 1862 QV no watermark 18c mint original gum. Good shade. VF.  | Start bid 1,200 |
| 3 | 1862 QV no watermark 48c mint dryish original gum. Good perf. with nice shade. Scarce.                                     | Start bid 3,000 |
| 4 | 1862 QV no watermark 96c. Skillfully re-gum but fresh deep shade with full perf. without usual fault. A famous rare stamp. | Start bid 5,000 |
| 5 | 1863 QV 2c to 96c 10 values without 18c and 96c bistre. All with wing margin cancelled Shanghai S1 killer. F-VF.           | Start bid 800   |
| 6 | 1863 QV 6c CC watermark. Mint OG. Fine with some toning spot.  | Start bid 800   |
| 7 | 1863 QV 12c pale blue OG, and scarce greenish blue shade mint no gum. Fine and scarce.                                     | Start bid 1,000 |



8



港幣起拍價

- |   |  |                  |
|---|--|------------------|
| 8 | 1863 QV 18c CC watermark with left wing margin. Full original gum mint never hinge. Even gum toning. Deep fresh shade with full perf. Exceedingly rare stamp, only few copies recorded. Possible unique in UM condition. 2002 David Brandon and 2014 BPA certification. This stamp sold in 2014 Interasia auction for HKD \$92000. | Start bid 35,000 |
|---|--|------------------|



港幣起拍價

9	1863 QV 18c CC watermark. Mint small part original gum. Few short perf. Fine and scarce.	Start bid 4,000
10	1863 QV 30c Mauve mint original gum. VF fresh white gum.	Start bid 800
11	1863 QV 30c Mauve wing margin x5. Cancelled different treaty port marking. Some perf. fault. Fine.	Start bid 400
12	1863 QV 24c CC watermark. Unused no gum but fresh shade and good perf. fine.	Start bid 600
13	1863 QV 96c olive bistre VF used with blue B62 killer. Nice deep shade. Scarce.	Start bid 2,000
14	1863 QV 96c brownish grey CC watermark. Unused no gum. Fresh shade. Fine.	Start bid 1,200
15	1863 QV 96c brownish grey CC watermark. Mint OG. Toning spot. Fine and scarce.	Start bid 1,500
16	1877 QV 16c CC watermark. Skillfully re-gum. Fresh shade. Fine and scarce.	Start bid 2,000
17	1880 QV surcharge set of 5, all cancelled Shanghai S1 killer. Few perf. fault. Fine.	Start bid 400
18	1880 QV 5c CC watermark. Mint re-gum. Fine.	Start bid 500
19	1880 QV 48c brown .CC watermark. No gum. Deep brown shade. Fine and scarce.	Start bid 1,500
20	1882 QV 2c rose lake .CA watermark. Mint never hinge OG. Light even toning. Scarce stamp.	Start bid 1,500
21	1885 QV 50c/48c brown strip of 3. Fresh mint never hinge full original gum. VF and rare strip.	Start bid 6,000





22



23



24



25



26



27



28



29



30



31

港幣起拍價

22	1885 QV \$1/96c Unused no gum. Minor printing variety on QVs hair. 1987 USA PF certification. Fine.	Start bid 600
23	1891 QV 50c/48c no Chinese character. Mint fresh OG. VF.	Start bid 1,000
24	1891 QV 14c/30c with small t variety. Disturbed gum. CV HKD \$5,000	Start bid 1,000
25	1898 QV 10c/30c with Chinese character. Wide 10 variety. HK cds. Normal stamp for comparison. Scarce. CV HKD\$6,000.	Start bid 1,000
26	Group of 5 1898 QV 10c/30c. All used with different treaty port cds. Fine.	Start bid 500
27	1898 QV \$1/96c with Chinese character. Mint OG. VF.	Start bid 700
28	1898 QV \$1/96c with Chinese character. Mint OG. VF.	Start bid 700
29	1900 QV Specimen set of 5. Mint OG. 10c with thin fault F-VF. Scarce set.	Start bid 1,000
30	1900 QV complete set of 6. Mint never hinge OG. Even toning on 10c. Fine-VF.	Start bid 1,000
31	1900 QV 12c Ca watermark pair with inscription margin. light hinged. OG. VF.	Start bid 500



32



33



34



35



36



37



38



39



40



41



42

港幣起拍價

- |    |   |                 |
|----|---|-----------------|
| 32 | 1900 QV 12c CA watermark.UM block of 4. VF.   | Start bid 1,200 |
| 33 | Small collection of QV 1900 issue. Values to 30c. All OG. F-VF.   | Start bid 600   |
| 34 | Small collection of 1900 QV 10c included gutter corner margin UM and two used strips. F-VF.                 | Start bid 400   |
| 35 | 1876 QV \$3 postal fiscal x2. Both with SPECIMEN overprint in different direction. Mint toning OG. Fine.    | Start bid 1,500 |
| 36 | 1891 QV \$5/\$10 postal fiscal. Mint OG. VF and fresh lightly hinged.                                       | Start bid 1,000 |
| 37 | 1891 QV 2c SD stamp duty overprint. Cancelled HK cds. VF.   | Start bid 800   |
| 38 | 1891 QV 2c SO stamp office overprint. Unused no gum. Some faded shade and pin hole. Space filler condition. | Start bid 500   |
| 39 | 1891 QV 10c SO stamp office overprint. CTO Victoria HK cds. VF. Scarce.                                     | Start bid 1,500 |
| 40 | 1879 QV 5c/18c postcard stamp Unused no gum. Fine.  | Start bid 750   |
| 41 | 1903 KE 10c gutter margin block of 4. Mint never hinge. OG. VF. One toning spot on margin.                  | Start bid 600   |
| 42 | 1903 KE top value \$10.Fresh mint never hinge original gum. Very scarce in such condition.                  | Start bid 7,000 |



43



44

港幣起拍價

- 43 1904 KE 1c 8c 12c 1904 2c 4c 5c 6c 10c 20c 30c 50c \$1 & \$2 all vertical pair cancelled same date Victoria HK cds dated 27-AP-1908. VF and scarce group. Start bid 1,000
- 44 1904 KE \$1 chalky paper block of 4. Fresh mint never hinge OG. Scarce in such condition. Start bid 4,000



45

港幣起拍價

- 45 1904 KE \$5 chalky paper. block of 4. Lightly mint on top pair. Bottom pair UM. Fresh white gum. Only few blocks exist. Extremely rare block of 4. Start bid 15,000



46

47

48

49

港幣起拍價

- 46 1904 KE \$10 thick chalky paper. Fresh mint never hinge OG. VF and scarce in such condition. Start bid 8,000
- 47 1907-11 KE set of 8. Fine mint original gum. F-VF. Start bid 1,200
- 48 1912 KGV \$5 white back. Mint OG. VF. Start bid 1,200
- 49 1912 KGV 1c to \$10 complete set of 17. VF used set. Start bid 900



50



51



52



53



54



55



56



57



58



59

港幣起拍價

- |    |   |                 |
|----|---|-----------------|
| 50 | 1912-1921 KGV used collection. Complete used set with some shade. F-VF.                           | Start bid 1,000 |
| 51 | 1921 KGV 5c corner block of 6 with Req. P30675. UM ever toning. Corner folded on one stamp. Fine. | Start bid 400   |
| 52 | 1912-1921 1c to 50c mixed watermark all with gutter margin. Most UM. F-VF.                        | Start bid 400   |
| 53 | 1912 and 1921 50c both green back. Both with gutter margin. UM. VF.                               | Start bid 400   |
| 54 | 1921 KGV top value \$5. Fresh mint never hinge OG. Fresh & VF.                                    | Start bid 2,000 |
| 55 | 1922 China BPO KGV \$2, script CA watermark. Fresh mint never hinge OG. VF. Scarce.               | Start bid 1,600 |
| 56 | 1938 KGV top value \$10, mint never hinge OG. Toning as usual. Fine.                              | Start bid 1,000 |
| 57 | 1938 KGV top value \$10, mint never hinge OG. Toning as usual. Fine.                              | Start bid 1,000 |
| 58 | 1938-41 KGV definitive issue values to \$5. All skillfully re-gum. Fine.                          | Start bid 300   |
| 59 | 1946 KGV postwar 1c to \$5. All with margin. UM. \$5 re-gum. Other OG. F-VF.                      | Start bid 700   |



60



61



62



63



64



65



66

港幣起拍價

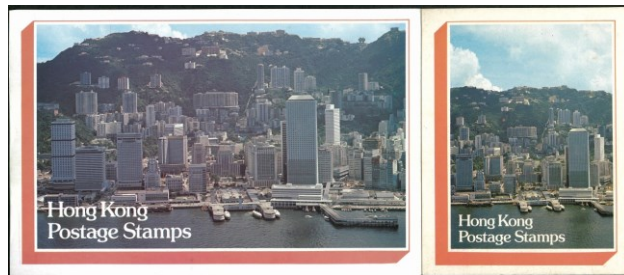
- |    |   |                 |
|----|---|-----------------|
| 60 | 1946 KGVI postwar complete set of 16. UM but with gum toning. Fine.   | Start bid 500   |
| 61 | 1954 QEII complete set of 14. Most with margin or plate 1 margin. \$5 with Req. Number. All UM except \$5 mint hinged. F-VF.                            | Start bid 1,000 |
| 62 | 1954 QEII 10c single and block. Complete plate 1 to 8. UM. Few block toning. F-VF. Scarce.  | Start bid 1,000 |
| 63 | Collection of 1954 QEII 10c Mint and used. Better included completed prefix or correction prefix plus some interesting postmark. F-VF and scarce group. | Start bid 1,500 |
| 64 | 1954 QEII 40c printing proof on unwatermarked brown paper. One small pin hole. Scarce.  | Start bid 1,400 |
| 65 | 1954 QEII 40c B/4 x2. With two Req. Block and two plate1 block. Fresh UM.   | Start bid 500   |
| 66 | 1962 QEII complete set of 15. Most with margin. Light gum toning. Fine.   | Start bid 450   |



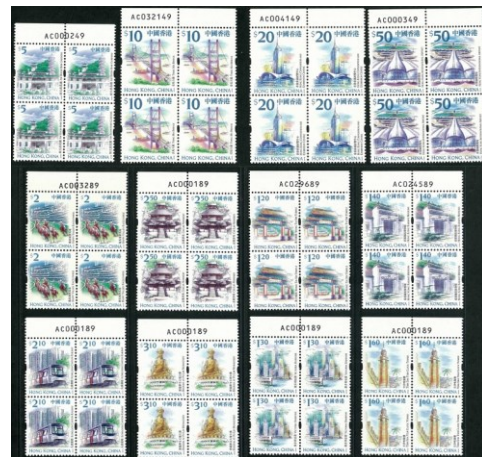
67



68



69



71



70

港幣起拍價

- |    |  |                 |
|----|--|-----------------|
| 67 | 1962 QE complete set of 15. Very fine fresh UM.  | Start bid 850   |
| 68 | 1970-73 QEII \$5 and \$20 PVA gum glazed paper. VF fresh UM.   | Start bid 400   |
| 69 | 1973-80 QEII definitive set and short set on large and small official stamp pack. VF.  | Start bid 300   |
| 70 | 1992-1996 collection of QEII definitive issue. All in block format with different prefix. Collection with printed table and showing only missing few prefix. All UM. F-VF. Difficult collection. (over 200 blocks) | Start bid 3,000 |
| 71 | 1999 definitive block of 4 complete set with AC prefix. VF fresh UM.   | Start bid 550   |

## Hong Kong – Booklet, Postage Due



72



73



74



75

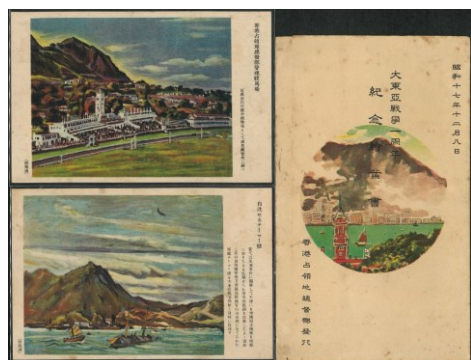


76

港幣起拍價

- |    |   |                 |
|----|---|-----------------|
| 72 | 1973 QEII \$2 and \$5 booklet. VF.  | Start bid 500   |
| 73 | 1923 postage due complete set of 5. Upright watermark. UM. Minor even toning.   | Start bid 400   |
| 74 | 1938-63 postage due 2 <sup>nd</sup> issue complete set plus white paper type 1c 2c 4c 10c. UM. Few toning.              | Start bid 600   |
| 75 | 1965 postage due 3 <sup>rd</sup> issue upright and sideways watermark set. Fresh UM.3 high values with plate 1. Scarce. | Start bid 1,500 |
| 76 | 1972-76 postage due 4 <sup>th</sup> issue x 2.5 <sup>th</sup> issue B/4. UM some toning spot. Fine.                     | Start bid 350   |

## Hong Kong – Japan Occupation



77



78



79

港幣起拍價

- |    |  |               |
|----|--|---------------|
| 77 | 1942 Ann. Great East war postcard set with folder. Both card franked 2s cancelled large commemorative chop. Fine. Toning. Cover with tear. | Start bid 400 |
| 78 | Group of 4 Da Luz philatelic covers with different branch office cds. VF.  | Start bid 700 |
| 79 | Group of 4 Da Luz philatelic covers with different branch office cds. VF.  | Start bid 700 |



80



81



82



83

港幣起拍價

- |    |  |                 |
|----|--|-----------------|
| 80 | Group of 5 Da Luz philatelic covers with different branch office cds. VF.  | Start bid 700   |
| 81 | Two Da Luz philatelic covers franked high value 5 Yen pair and 10 Yen cancelled HK or Kowloon cds. VF.   | Start bid 600   |
| 82 | 1943 Da Luz philatelic cover franked 10 Yen cancelled Yaumati cds. VF.   | Start bid 450   |
| 83 | 1942 Ann. of Great East war photo album. Deleux case with set of 40 large size photo. We are not sure included HK or not. All photo VF without fault. Good condition. Viewing recommended. | Start bid 1,500 |

### Hong Kong – Cancellation



84



85



86



87



88

港幣起拍價

- |    |   |               |
|----|---|---------------|
| 84 | 1862 QV 8c no watermark with B62 and red AMOY PAID cds. VF with clear marking.            | Start bid 300 |
| 85 | 1877 QV 16c cancelled FOOCHOW type I F1 killer in black. VF.                              | Start bid 300 |
| 86 | 1863 QV 48c cancelled FOOCHOW type I F1 killer in black. Fresh deep shade. Scarce on 48c. | Start bid 800 |
| 87 | 1863 QV 2c with B62 plus blue Hankow D29 killer. VF.                                      | Start bid 600 |
| 88 | Small collection of HK or treaty port postmark included A1 C1 IPO or ship marking. F-VF.  | Start bid 350 |





89



90



91



92



93



94



95



96

港幣起拍價

- |    |  |                 |
|----|--|-----------------|
| 89 | 1882 QV 2c x5 all with unusual marking included Custom Kowloon. Foochow Cancelled etc. VF. | Start bid 400   |
| 90 | 1880 QV 10c/16c with clear 62B killer in black. Repair corner. Scarce.                     | Start bid 500   |
| 91 | 1863 QV 96c olive bistre cancelled 62B killer in blue. Fine and scarce.                    | Start bid 3,000 |
| 92 | 1891 QV 10c red cancelled Kowloon Branch KB type I cds. Slightly round corner. Fine.       | Start bid 400   |
| 93 | 1896 QV 4c cancelled German office in China postmark TSINTAU CHINA. Full chop. Rare.       | Start bid 800   |
| 94 | 1882 QV 5c cancelled Japan SHIP postmark. VF.  | Start bid 300   |
| 95 | 1882 QV 2c cancelled Japan NAGASAKI single ring cds. Tear at left. Fine.                   | Start bid 300   |
| 96 | Small collection of HK QV firm chop better included IMC. Oval B&S etc. F-VF.               | Start bid 400   |

## Hong Kong – Revenue



97



98



99

港幣起拍價

- |    |  |                 |
|----|--|-----------------|
| 97 | 1880s QV revenue 2c. CC blue cancelled HK Paid all cds. 2c CA postally used HK cds. F-VF.                      | Start bid 400   |
| 98 | Collection of early KGVI period revenue. All in block. From surcharge to \$4. Most VF UM. Viewing recommended. | Start bid 1,000 |
| 99 | Collection of HK revenue from QV to KGVI some on piece. Mainly used values to \$20. F-VF.                      | Start bid 500   |

## Hong Kong – Error



### 港幣起拍價

100	1863 QV 48c mint original gum with inverted watermark variety. Deep fresh shade. Fine and rare. CV HKD \$20,000.	Start bid 7,000
101	1877 QV 16c with inverted CC watermark variety. Cancelled B62 killer VF and scarce.	Start bid 1,000
102	1885 QV 20c/30c & 1882 QV 2c. Both with inverted watermark. Both with minor fault. Fine.	Start bid 500
103	1891 QV 20c/30c with double Chinese character variety. Mint OG. Even toning. 1956 BPA certification. Fine.	Start bid 1,000
104	1891 QV \$1/96c with Chinese character on both side variety. Fiscally used. Sold AS-IS.	Start bid 800
105	1876 QV \$2 postal fiscal cancelled B62 with perf. shift. Fine.	Start bid 300
106	1946 KGVI 1c corner block of 4. Showing perf shift variety touch to design, UM. VF. Unusual.	Start bid 400
107	1946 KGVI 5c single. Showing curve and broken on inner frame line. Plate flaw??. Mint OG.	Start bid 250
108	1962 QEII \$1.3 plate corner block of 4 with Req P25356. Showing Pink colour shift variety. VF UM.	Start bid 600
109	1962 QEII \$1.3 plate corner block of 4 showing ochre colour shift up. Plate 1B shift into stamp design. UM with few toning spot. Scarce.	Start bid 600
110	1962 QEII \$2 plate corner block of 6 showing ochre colour shift down variety. Fresh UM. Scarce.	Start bid 900
111	1970 QEII \$5 PVA gum Chalky paper. Plate B/6 showing Pink colour shift. Fresh UM. Scarce.	Start bid 1,000
112	1962 QEII \$5 plate block of 6 showing yellow colour shift to right variety. Fresh UM. Scarce.	Start bid 1,000



113



114



115



116



117



118



119



120



121



122

港幣起拍價

113	1962 QEII \$10 single showing multiple colour shift variety. VF fresh UM. Scarce.	Start bid 1,000
114	1962 QEII \$10 single showing blue colour shift variety. VF fresh UM. Scarce on \$10.	Start bid 600
115	1962 QEII \$10 single showing pink colour shift variety. VF fresh UM. Scarce on \$10.	Start bid 600
116	1962-1982 group of 4 definitive B/4 showing inverted watermark variety. VF UM.	Start bid 600
117	1968 Coat of Arm 65c pair showing colour shift and pre-printing paper folded variety. Mint hinged. Light even toning. Very scarce error.	Start bid 700
118	1968 Coat of Arm 65c single. Showing blue shift variety. VF UM. Scarce.	Start bid 400
119	1968 Coat of Arm 65c \$1x2 all showing minor colour shift variety. Fresh UM. VF. One \$1 toning.	Start bid 300
120	1973 QEII 30c block of 4 with perf. shift variety. VF UM.	Start bid 300
121	1982 QEII 30c B/4 & B/16 and 80c B/4 all showing QEII's head shift variety. VF fresh UM.	Start bid 600
122	1982 QEII coil collection. 10c showing perf. shift. Another strip with blur printing on QEII. VF.	Start bid 250



123



124



125



126



127



128



129



130

港幣起拍價

123	1982 QEII \$5 pair without embossing. Another B/4 and B/6 showing embossing shift. UM VF.	Start bid 400
124	1982 QEII \$5 and \$10 block of 4 with inverted sideways watermark variety. VF UM.	Start bid 300
125	1996 QEII definitive block of 4 showing colour missing variety. Unused no gum and toning. Fine.	Start bid 1,000
126	1992 QEII definitive \$10 pair with printing line variety UM. Also \$50 with printing variety??. Fine used.	Start bid 300
127	1963 red cross 10c plate block of 4 showing perf. shift variety. Fresh UM. VF.	Start bid 400
128	1965 Churchill \$2 with gold shift to right variety. VF fresh UM.	Start bid 400
129	1966 UNESCO 50c plate block of 4 showing perf. shift variety. UM. VF.	Start bid 300
130	Small collection of HK commemorative issue. All with minor plate flaw or colour different. Some with toning. F-VF.	Start bid 400



131



132



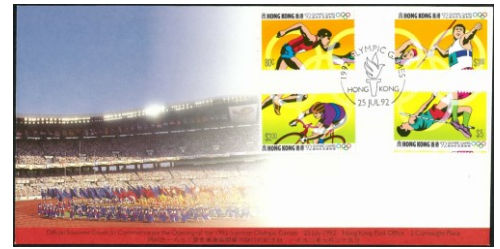
133



134



135



136

港幣起拍價

- |     |   |                  |
|-----|---|------------------|
| 131 | Small collection of HK commemorative issue. All with minor plate flaw, perf. shift or colour missing. Some with toning. F-VF.   | Start bid 350    |
| 132 | 1981 Public Housing MS x9 with upright watermark variety. UM. Few with light toning spot. F-VF.   | Start bid 1,000  |
| 133 | 2015 HK Scientists in Ancient China MS showing perf. shift variety, one toning spot at top and rough edge due to poor cutting. Fine and rare error from modern issue. | Start bid 10,000 |
| 134 | 1962 Stamp Centenary GPO FDC showing missing black colour on FDC. VF and rare.  | Start bid 1,500  |
| 135 | 1986 19 <sup>th</sup> Century HK Portraits GPO FDC showing colour shift on FDC. VF and unusual.   | Start bid 1,000  |
| 136 | 1992 Olympic GPO FDC. \$5 stamp with perf. shift variety. VF and unusual.   | Start bid 400    |

**Hong Kong – Commemorative**



137



138



139



140



141



142



143

港幣起拍價

- |     |   |                 |
|-----|---|-----------------|
| 137 | 1891 QV 2c Jubilee. Short U and broken 1 plate flaw. UM gum toning. Fine. | Start bid 3,000 |
| 138 | 1891 QV 2c Jubilee. Tall K plate variety. Cancelled HK cds. VF.           | Start bid 1,000 |
| 139 | 1891 QV 2c Jubilee. Used on piece cancelled 7-SP-1892 cds. VF.            | Start bid 900   |
| 140 | 1891 QV 2c Jubilee. VFU CTO HK cds. VF.                                   | Start bid 600   |
| 141 | 1891 QV 2c Jubilee. VFU CTO HK cds date 26-JA-1891. VF.                   | Start bid 600   |
| 142 | 1891 QV 2c Jubilee. Broken 1 plate variety. First day cds. VF.            | Start bid 800   |
| 143 | 1891 QV 2c Jubilee. (o n) spacing variety. B62 killer. Fine used.         | Start bid 1,500 |



144



145



146



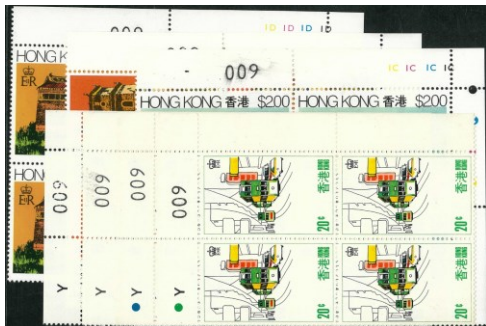
147



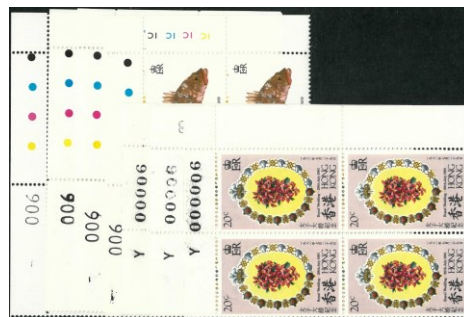
148



149



150



151

港幣起拍價

- |     |   |                 |
|-----|---|-----------------|
| 144 | 1935 Silver Jubilee complete set of 4. Fresh UM white gum. Scarce in such condition. VF.  | Start bid 500   |
| 145 | 1948 Silver Wedding complete set of 2. Fresh UM white gum. Scarce in such condition. VF.  | Start bid 1,200 |
| 146 | 1948 Silver Wedding 10c complete sheet of 60. With sheet number and toe N variety. UM. minor even toning. VF.   | Start bid 700   |
| 147 | 1968 Year of Monkey corner block of 4 with sheet number E. VF fresh UM. Scarce.   | Start bid 1,500 |
| 148 | 1969 Year of Cock set of 2 in block of 4. Fresh UM. VF.   | Start bid 1,000 |
| 149 | 1970 Year of Dog set of 2 in block of 4. Fresh UM. VF.  | Start bid 1,000 |
| 150 | 1977 Tourism & 1980 Rural Architecture corner B/4. Both with matched sheet number <b>009</b> , Tourism fresh UM another block minor toning. Unusual item. | Start bid 600   |
| 151 | 1981 Fish and Royal wedding corner block of 4. Both with match sheet number <b>006</b> . Fresh UM. Unusual item.  | Start bid 500   |

## Hong Kong – First Day Cover, First Flight Cover



152



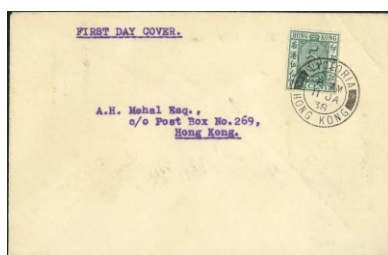
153



154



155



156



157



158



159



160

港幣起拍價

- |     |   |               |
|-----|---|---------------|
| 152 | 1937 first flight cover HK to Peiping line. Post to Peiping China with arrival marking. Fine.   | Start bid 300 |
| 153 | 1949 FFC Canadian Pacific Air Line HK to Vancouver. Franked KGVI 30c & \$2. Post to Canada with arrival marking on back. VF and scarce. | Start bid 400 |
| 154 | Group of 6 covers included FFC plus some FDC (single franking) and branch office cds. Fine.   | Start bid 300 |
| 155 | Group of 5 covers included Military Mail FDC and two ship covers. Fine.   | Start bid 300 |
| 156 | 1938 postal fiscal 5c on cover post local. Cancelled 11st Jan 1938 cds. FDC. VF.  | Start bid 300 |
| 157 | 1937 Coronation FDC with unusual design. Post local. Fine and scarce.   | Start bid 500 |
| 158 | 1946 Victory set of 2 on unusual design FDC. Post local. Fine and scarce.   | Start bid 600 |
| 159 | 1946 Victory set of 2 on FDC post to Swatow. With Swatow arrival marking alongside. Fine.   | Start bid 300 |
| 160 | 1949 UPU set of 4 on CPA FDC, post local. Fine.   | Start bid 350 |



161



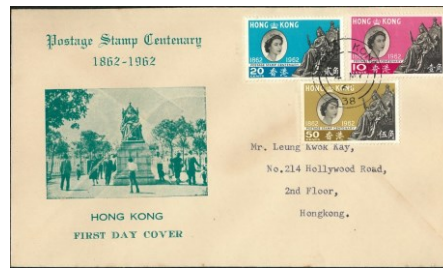
162



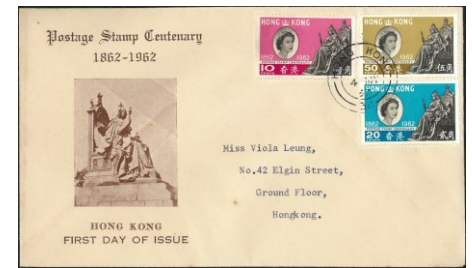
163



164



165



166



167



168



169

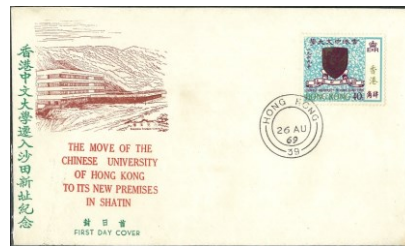
港幣起拍價

- |     |  |                 |
|-----|--|-----------------|
| 161 | 1954 QEII definitive FDC. Short set franking to \$1 plus 1953 coronation 10c but uncanceled. Sai Ying Pun cds. VF. | Start bid 700   |
| 162 | 1954 QEII definitive FDC. Franked complete set. But \$10 stamp uncanceled. Postal local. VF.                       | Start bid 700   |
| 163 | Group of 3 early FDCs. 1961 HKU. 1967 Year of Ram and 1966 UNESCO. Fine.   | Start bid 300   |
| 164 | 1962 QEII definitive set of 15 on large size FDC. Postal local. VF.  | Start bid 2,000 |
| 165 | 1962 Stamp Centenary set of 3 on unusual design FDC. VF and Rare.  | Start bid 500   |
| 166 | 1962 Stamp Centenary set of 3 on unusual design FDC. VF and Rare.  | Start bid 500   |
| 167 | 1965 Churchill set of 4 on CPA FDC. Blue colour design. Post local. VF and scarce.                                 | Start bid 2,000 |
| 168 | 1965 Churchill set of 4 on two CPA FDCs. Green and purple colour design. Post local. VF.                           | Start bid 800   |
| 169 | 1966 WHO CPA FDC. Purple colour design. Post to Switzerland. Toning. Fine.   | Start bid 300   |





170



171



172



173



174



175



176



177



178

港幣起拍價

170	1968 HK Seacraft GPO FDC x2. Both unaddressed. One cover with toning spot. F-VF.	Start bid 450
171	1969 HK Chinese University 40c on CPA FDC. VF.	Start bid 500
172	1969 HK Chinese University 40c on GPO FDC with large blue Chung CPI College chop. Toning. Fine.	Start bid 300
173	1966 UNESCO and 1969 Satellite CPA FDC. Fine. Satellite FDC with Stanley branch cds.	Start bid 450
174	1971 Diamond Jubilee set of 3 on non-GPO FDC. With <b>error year 70</b> Hong Kong (39) cds. Minor toning around stamp. Fine and scarce.	Start bid 1,500
175	Group of 4 early HK FDC. All CPA issue. Some toning spot. Fine.	Start bid 350
176	Group of 6 FDCs all from 1973-1980 definitive issue, F-VF.	Start bid 400
177	Group of 3 early CPA FDCs. Mainly fine.	Start bid 450
178	1973 HK Festival set of 3 on non-GPO issue FDC. Fine and unusual.	Start bid 300



179



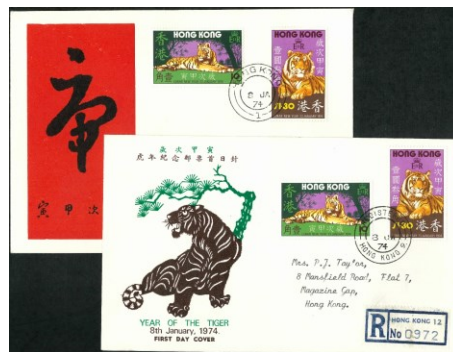
180



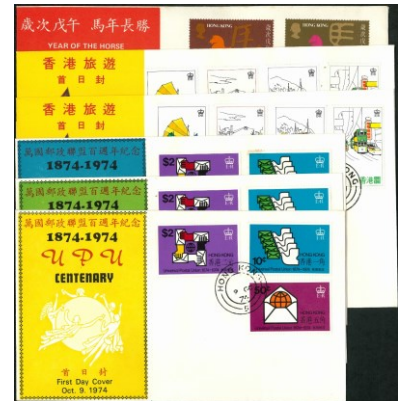
181



182



183



184



185



186



187

港幣起拍價

- |     |  |                 |
|-----|--|-----------------|
| 179 | Group of 3 non-GPO issue FDCs. Better included HK Festival gold printing FDC. Fine.  | Start bid 350   |
| 180 | 1974 Arts Festival stamp and MS FDC. Both with minor toning spot. Fine.  | Start bid 700   |
| 181 | Group of 47 WHO FDCs. All GPO issue except two covers from CPA. All cancelled different branch office cds. Better included mobile PO. Sha tau kok. Tai O etc. Viewing recommended. | Start bid 2,000 |
| 182 | 1973 Royal Wedding CPA FDC. Post to UK. Fine.  | Start bid 200   |
| 183 | 1974 Year of the Tiger FDCs x2. Both non-GPO issue. VF.  | Start bid 250   |
| 184 | Group of 6 early HK FDCs, all non-GPO issue. F-VF.   | Start bid 400   |
| 185 | 1976 Diamond Jubilee set of 2 on CPA FDC. Orange colour design. Post local. Fine.  | Start bid 400   |
| 186 | Group of 22 early GPO FDCs, all unaddressed. VF.   | Start bid 300   |
| 187 | Group of 33 GPO FDCs mainly 80s all cancelled Lei Muk Shue branch office cds. F-VF.  | Start bid 300   |



188



189



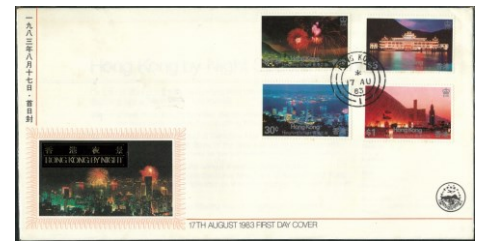
190



191



192



193



194



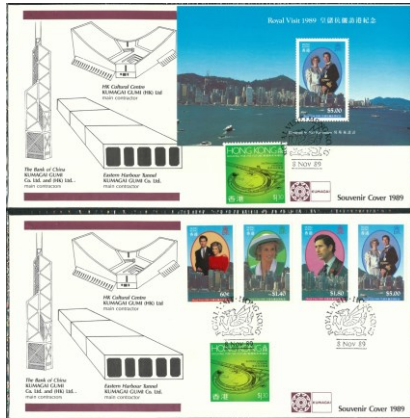
195



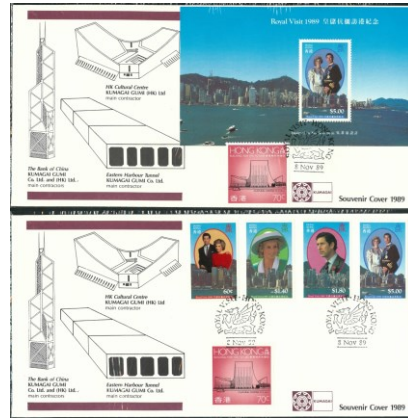
196

港幣起拍價

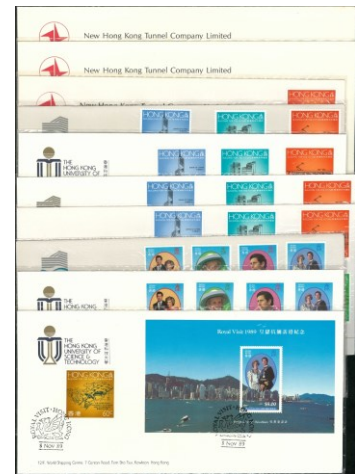
- |     |  |               |
|-----|--|---------------|
| 188 | 1979 HK MTR FDCs x8. Covers issued by HKSCDA, different design and colour. VF. | Start bid 350 |
| 189 | Group of 7 HK PB envelope FDCs from 70-80s. Fine. Unusual group.               | Start bid 500 |
| 190 | 1980 Queens Mother Birthday CPA FDC. Unaddressed. Fine.                        | Start bid 300 |
| 191 | 1981 HK Fish set of 4 on GPO FDC. Crown Agent FDC. Fine with light toning.     | Start bid 200 |
| 192 | 1981 Public Housing MS CPA FDCs x3. Minor toning spot. F-VF.                   | Start bid 500 |
| 193 | 1983 HK night set of 4 on CPA FDC. VF.   | Start bid 300 |
| 194 | 1989 QEII Definitive complete set FDC. On GPO FDC. VF.                         | Start bid 400 |
| 195 | 1990 QEII Definitive complete set FDC. On GPO FDC. VF.                         | Start bid 400 |
| 196 | 1991 QEII Definitive complete set FDC x2. On GPO FDC. Some toning spot. Fine.  | Start bid 500 |



197



198



199



200



201



202



203

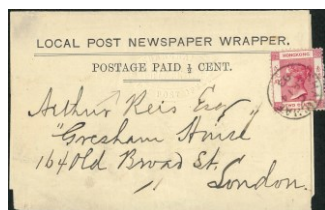


204

港幣起拍價

197	1989 KUMAGAI GUMI contractor FDC pair set. Both franked Royal visit stamp and MS plus Harbour Tunnel \$1.3. VF.	Start bid 400
198	1989 KUMAGAI GUMI contractor FDC pair set. Both franked Royal visit stamp and MS plus Culture Center \$0.7. VF.	Start bid 400
199	Group of 10 special FDCs all private firm design and related to stamp issue. Better included Science and Technology University. VF.	Start bid 500
200	Group of 7 modern CPA FDC. All VF.	Start bid 300
201	1992 World Columbian Stamp Expo FDC x5. All with USA stamps franked together with large Expo chop. VF.	Start bid 400
202	Group of 4 90s association issue FDC. All VF.	Start bid 300
203	2005 HK Pop Singers stamp and MS on CPA FDCs. All VF.	Start bid 300
204	2011 Stamp Exhibition of Xinhai Revolution organized by CPA. First and last day covers. VF.	Start bid 250

## Hong Kong – Postal History



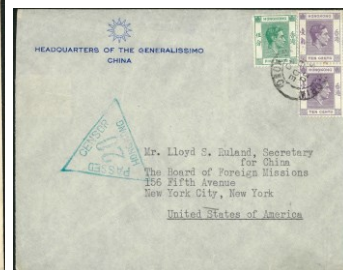
205



206



207



208



209



210



211



212



213



214

港幣起拍價

- |     |   |                 |
|-----|---|-----------------|
| 205 | 1893 Shanghai Local Post 1/2c wrapper (back with light Shanghai Local Post chop dated 3-SEP-1893) Front franked HK QV 2c cancelled Shanghai cds dated 14-SEP-1893. Unusual.                 | Start bid 800   |
| 206 | 1904 cover post to Egypt franked KE 20c cancelled M&Co firm chop and Deutsche Seepost ship marking. VF.   | Start bid 700   |
| 207 | 1938 postal fiscal 5c on cover post to Shanghai. Cancelled Victoria HK cds dated 18-JA-1938. With RECEIVED IN SUCH CONDITION box marking alongside. Back with Shanghai arrival marking. VF. | Start bid 500   |
| 208 | 1940 cover to USA franked KGV 5c & 10c pair cancelled HK cds. With PASSED BY CENSOR HK Number 20 triangle marking. VF.  | Start bid 300   |
| 209 | 1945 Postage paid box marking on philatelic cover made by Mr H Da Luz. VF.  | Start bid 600   |
| 210 | 1947 cover to UK franked KGV 20c black perfin HSBC. With UK arrival machine cancel. Late used HSBC perfin. Fine.  | Start bid 300   |
| 211 | 1974 commercial cover to China both with Culture Revolution slogan marking. Fine.   | Start bid 300   |
| 212 | Group of 7 70s commercial covers all with slogan marking. F-VF.   | Start bid 300   |
| 213 | 1974 three Conservancy Association wrapper post local all with red KSO PP Kowloon sorting office cds. F-VF.   | Start bid 1,000 |
| 214 | Group of 4 commercial covers with supplementary chop, instructional marking etc. F-VF.  | Start bid 300   |



215



216



217



218

港幣起拍價

- |     |  |               |
|-----|--|---------------|
| 215 | Group of 6 commercial covers or wrapper all with different instructional marking. Interesting group. | Start bid 400 |
| 216 | Group of 7 commercial covers from 70-80s with AR or Express marking. F-VF.                           | Start bid 400 |
| 217 | 80s commercial cover to Canada. With HK PP 1 red triangle machine marking. Very scarce.              | Start bid 500 |
| 218 | Collection of commercial covers from 70-80s. Many different stamps franking and postal rate. F-VF.   | Start bid 300 |

## Hong Kong – Postal Stationery



219



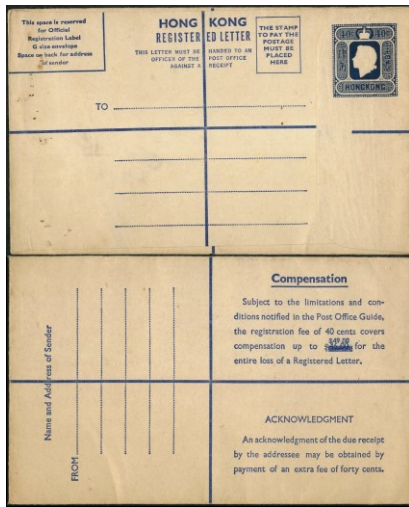
220



221

港幣起拍價

- |     |  |               |
|-----|--|---------------|
| 219 | 1890s group of 4 UPU postal card 4c, all postally used. Fine.  | Start bid 500 |
| 220 | 1906 KE 2c postal envelope uprate KE 8c post to Germany. Cancelled Shanghai cds, back with Speyer arrival marking. VF.               | Start bid 400 |
| 221 | 1908 KE 4c postal envelope uprate 1c and 2c pair cancelled HK cds. Post to Africa with arrival marking on back. Unusual destination. | Start bid 600 |



222



223



224

		港幣起拍價
222	1950s QEII 40c registered envelope (size H) unused with surcharge \$49/\$46. Light toning spot. Scarce.	Start bid 800
223	1980s group of 3 registered envelopes all postally used. Two with express label. F-VF.	Start bid 600
224	1969 Christmas aerogramme post local. Franked Cock 10c with HK Festival label alongside. Cancelled HK machine chop. Fine and unusual.	Start bid 500

## Hong Kong – Post Card



225



226



227

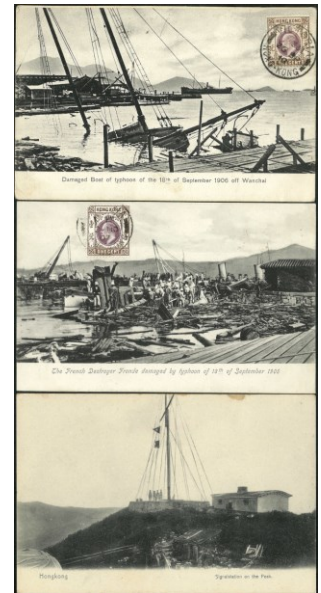
		港幣起拍價
225	Early Hong Kong picture postcard x2. Both franked QV 4c. VF.	Start bid 350
226	Early Hong Kong picture postcard x2. Both franked QV 4c. VF.	Start bid 350
227	Early Hong Kong picture postcard x2. Both franked QV 4c. VF.	Start bid 350



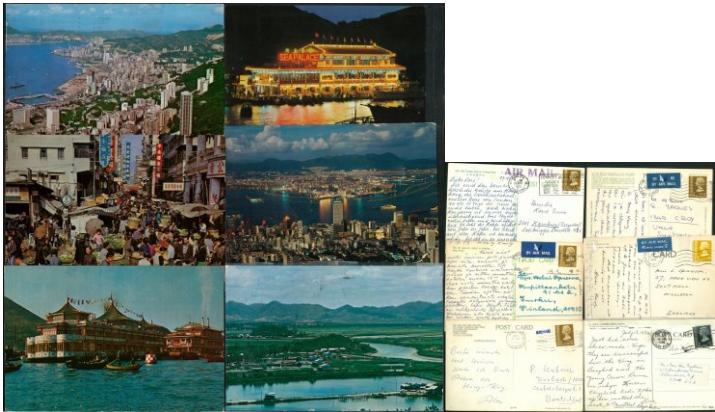
228



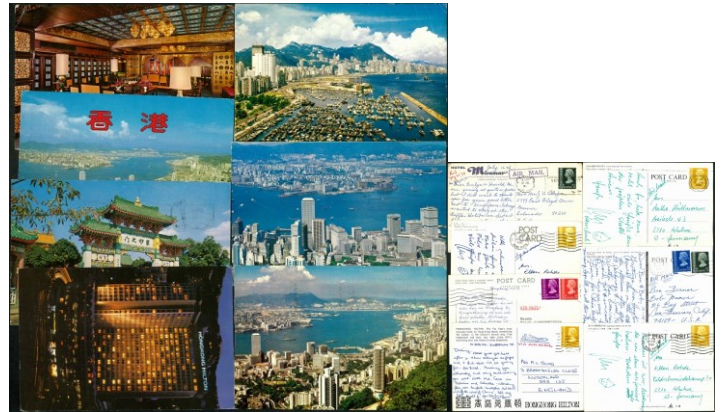
229



230



231



232



233



234



235

港幣起拍價

- |     |   |               |
|-----|---|---------------|
| 228 | Early Hong Kong picture postcard x2. Both franked QV 4c. VF.  | Start bid 350 |
| 229 | 1908 port Arthus postcard franked KE 4c with DOC firm perfin. VF.   | Start bid 300 |
| 230 | Group of 3 early HK picture postcards. One unused. Two Showing HK view damaged by typhoon 1908. Franked KE 1c CTO HK cds. VF. | Start bid 400 |
| 231 | Group of 6 1970s picture postcards. All postally used. F-VF.  | Start bid 300 |
| 232 | Group of 7 1970s picture postcards. All postally used. F-VF.  | Start bid 300 |
| 233 | 1907 early postcard to UK. Franked KE 4c cancelled Shanghai BPO cds. VF.  | Start bid 200 |
| 234 | 1930s Hong Kong real photo postcard. Showing Pedder street. Unused. VF.   | Start bid 400 |
| 235 | 1930s Hong Kong real photo postcard. Showing Des Voeux West. Unused. VF.  | Start bid 450 |





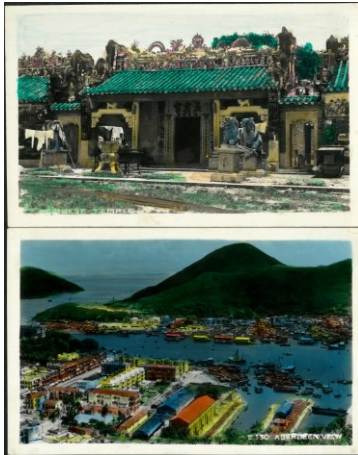
236



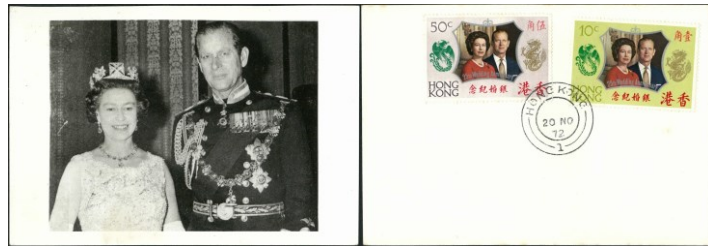
237



238



239



240

港幣起拍價

- |     |  |               |
|-----|--|---------------|
| 236 | 1940s Hong Kong real photo postcard showing Salisbury Road Kowloon. And Peninsula Hotel under construction. Hotel reconstruction after Japan Occupation HK. Unused and rare. | Start bid 600 |
| 237 | 1940s Hong Kong real photo postcard showing busy pier in central. VF unused. Scarce.   | Start bid 500 |
| 238 | 1955 HK real photo postcard showing Queens Theater in Queens Road Centre. Franked QEII 50c post airmail to France. VF.   | Start bid 600 |
| 239 | Two 1950s HK real photo postcards both hand tinted. Unused. Fine.  | Start bid 450 |
| 240 | 1972 real photo of royal wedding. Back with complete set 1972 royal wedding cancelled first day chop. Unusual item.  | Start bid 300 |

### Hong Kong – Collection



241

港幣起拍價

- |     |   |               |
|-----|---|---------------|
| 241 | Hong Kong QV to KGV collection on stock card or album pages. Mainly used. Better included VF 1891 Jubilee. High CV. | Start bid 700 |
|-----|---|---------------|



242



243

港幣起拍價

242 HK Collection from QV to QEII on album pages. Mainly used. F-VF.

Start bid 400

243 Hong Kong QEII collection mainly definitive issue from 1970-90s. Also two registered envelope. Unused. Mixed condition. Fine.

Start bid 300

## Worldwide



244



245



246



247



248



249

港幣起拍價

244 台湾 1961 十八宝新全。有贴印。\$2.4 无胶及面有污。\$3.2 缺角。上品。

Start bid 500

245 台湾四皇新全。原胶样票。金有微氧化。近全品。

Start bid 1,000

246 台湾 1962 储金三全及 1966 中国戏剧面谱四全。全部样票。金有微氧化。近全品。

Start bid 1,000

247 台湾 1969 古画四全及 1970 十二月令图。样票。原胶有黄。上品。

Start bid 400

248 澳门 1892 路易士一世。30/200R 邮资片双片 1 件。盖销澳门印。上品。

Start bid 300

249 澳门 1941 风景第一组高值 5 元。微黄。上品。

Start bid 500



250



251



252

- 250 澳门 1953 花卉邮票。十全横 5 连带厂铭。原胶。全品。
- 251 澳门版票 鸡年, 兔年各 1 版及猴年 2 版。其中 1 版猴年有黄。余全品。
- 252 澳门 1989 水上飞机版票 50 套。挺版。有 1 小黄点在纸边上。票全品。

港幣起拍價

Start bid 1,000

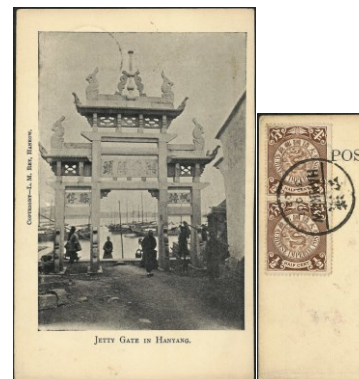
Start bid 500

Start bid 800

## China



253



254



255



256

- 253 1907 清三片实寄上海。销上海工部印。上品。
- 254 大清汉口名信片寄汉口本地。贴蟠螭半分双连。销汉口小圆印。上品。
- 255 大清 1900 年上海时报名信片 1 件。贴蟠螭半分 2 枚。及香港 QV 2 仙 1 枚。全部销香港印。上品。
- 256 民国实寄封 2 件及新中国文革实寄封 1 件。上品。

港幣起拍價

Start bid 3,000

Start bid 350

Start bid 500

Start bid 400



257



258



259



260



261



262



263

港幣起拍價

- |     |  |                  |
|-----|--|------------------|
| 257 | 1983 新中国 T88 小本票及张。首日实寄封寄新加坡。背有新加坡到达印。上品。    | Start bid 600    |
| 258 | 大清九江书信馆第一组新票 7 枚。原胶有贴印。上品。                   | Start bid 300    |
| 259 | 大清蟠螭阔边 3 分旧票 1 枚。销红色海关印。有薄裂。中品。              | Start bid 500    |
| 260 | 1897 大清石印蟠螭新票 12 全。4 分及 50 分发黄。1 元有轻微揭薄。余上品。 | Start bid 10,000 |
| 261 | 1912 蟠螭半分加盖 BRA 5 仙。原胶有贴印。上品。                | Start bid 750    |
| 262 | 1911 西藏蟠螭加盖新票 11 全。除 8 分及 1 元无胶外。全部原胶。上品。    | Start bid 11,000 |
| 263 | 民国新票 1 份及实寄封 3 件。上品。                         | Start bid 550    |



264



265



266



267



268



269

港幣起拍價

- |     |                                   |               |
|-----|-----------------------------------|---------------|
| 264 | 民国孙像限新省贴用。无水印新票 9 全双连。轻微黄。上品。     | Start bid 600 |
| 265 | 新中国纪特票 1 份。包括 3 套盖销及 5 套新票。有黄。上品。 | Start bid 500 |
| 266 | 新中国盖销及信销邮集 1 份。包含少量香港票。部份有损。中至上品。 | Start bid 600 |
| 267 | 纪 86 及纪 95 新票 2 套。有黄。上品。          | Start bid 500 |
| 268 | 纪 90 及纪 93 新票 2 套。有黄。上品。          | Start bid 500 |
| 269 | 特 38 信销 1 套及少量新中国新票。上品。           | Start bid 400 |



270



271



272



273



274



275



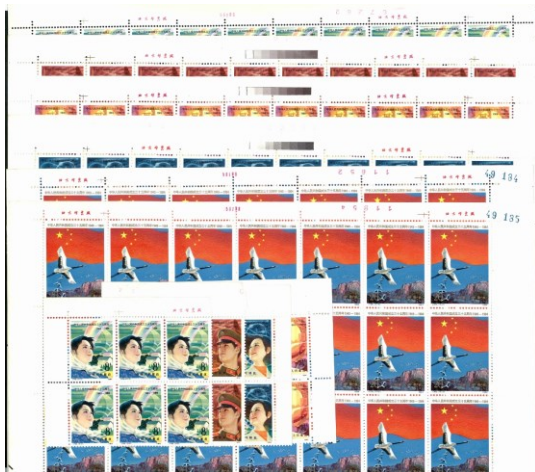
276



277

港幣起拍價

- |     |  |                 |
|-----|--|-----------------|
| 270 | 纪 81 及特 41 新票 2 套。有黄。上品。                 | Start bid 500   |
| 271 | 纪 28 特 25 及特 49 新票 3 套。有黄。上品。            | Start bid 500   |
| 272 | 特 61M 牡丹型张新 1 枚。有黄点。上品。                  | Start bid 7,500 |
| 273 | N49 至 N52 厂铭新票 1 套。全品。J22 厂铭 1 套。金有氧。上品。 | Start bid 400   |
| 274 | 69M 红楼梦型张新 1 枚。微黄。上品。                    | Start bid 500   |
| 275 | 新中国 T 票共 9 套。包括 T64 为 6 方连。部份微黄。上品。      | Start bid 400   |
| 276 | JT 新票共 23 套。有黄。上品。                       | Start bid 600   |
| 277 | J71 小版共 8 套。及 T99 16 方连。微黄。上品。           | Start bid 350   |



278



279



280



281

港幣起拍價

278	J105 版票共 56 套。挺版。微黃。上品。	Start bid 550
279	T135 版票及大方连共 276 套。部份金有微氧。上品至全品。	Start bid 450
280	红军邮版票 1 版。部份有黃。大多数全品。	Start bid 1,000
281	1999 民族大团结版票邮册共 8 本。上品。	Start bid 300

~ End of Auction ~

41<sup>st</sup> Public Auction (China - HK - Macau Live Auction)

End of August 2024

~ Please contact HKPNC for consignment ~

# TERMS OF SALE

1. Hong Kong Philatelic & Numismatic Company Limited (HKPNC) is acting as agent for the respective sellers of the lots in the auction. All lots are offered subject to a starting price, bids lower than starting price will not be accepted.
2. Estimates (starting price) have been given for all lots in this auction. They are meant to reflect our idea of the current market value of the item given its scarcity and condition.
3. The highest bidder acknowledged by HKPNC shall be the buyer. A buyer's premium of 15% shall be added to the hammer price of each lot.
4. Postal Bid Forms should be sent or faxed to be received by our office before 24:00 auction day. No 'UNLIMITED' or 'BUY BID' or 'AT BEST' 'HIGHEST' will be accepted. Local & oversea Clients may bid by fax, email, HKPNC's mobile APPS.
5. All lots will be sold to the highest bidder. Successful bidder will be awarded the lot only at a nominal advance over the next highest bid. Extension of lots should be noted on bid forms. For lots that requested extension, HKPNC will submit the item to a mutually acceptable expertise, providing that: 1) The lot will be paid for in full plus all charges for expertizing, including postage, mail registration, insurance and handling at the time of purchase, and 2) The expertise can provide a written opinion within 90 days of the auction date and will be delay for waiting more expert's opinion. All costs and charges for expertization are the sole responsibility and liability of the buyers. All cost for any fail opinion certification is the responsibility of the Vendor.
6. The lots offered in the auction catalogue can be inspected by potential bidders prior to the auction at public viewing as set forth in the auction catalogue. Viewers will be responsible for any damage caused by them in the viewing.
7. The buyer agrees to pay all shipping and handling costs. It is solely the buyer's responsibility to notify HKPNC of any special shipping instructions. In the case of tie bids or any other disputes arising, HKPNC's decision will be final.
8. All invoices are payable in Hong Kong dollars. Payment in any other currencies will not be accepted unless prior arrangements have been made, with such payment to include all additional bank charges. All foreign currency personal cheques and Euro cheques will not be accepted. A standard HK\$300 shipping/handling fee per shipment of purchase will be charged, there will be additional charges for carton lot shipments. Overseas buyers must furnish their own insurance during shipment.
9. Payment of lots is due within 20 days from the auction date, except in the case of postal or other bids that HKPNC executes on behalf of bidders do not present at the auction, such payment is due on presentation of HKPNC's invoice for the lots. Lots will not be given or sent to buyers until payment in full.
10. All invoices that are not paid within 30 days after the auction shall be subject to a 5% late fee and shall also bear interest at the rate of 1% per month from the date of the auction. If lots are not paid for in full within 30 days after the auction, HKPNC shall have the right to exercise one or more of the following rights and remedies: (a) to cancel the sale, (b) to resell the lots at public or private sale, with the defaulting buyer to be responsible for any loss from the resale and all costs and expenses in connection therewith, (c) to apply any amounts received from the buyer or owing to the buyer from HKPNC Auctions against the amounts owing to HKPNC Auctions, or (d) to sue the buyer for breach of contract. The buyer shall be responsible for all costs and expenses, including legal fees and collection costs, incurred by HKPNC in collecting on defaulted invoices and delinquent accounts.
11. All bidders will not be granted any return privileges. It is presumed that all floor bidders have inspected the lots prior to bidding. Therefore, lots purchased by floor bidders are sold "AS IS" and may not be returned. All lots containing more than two items may not be returned under any circumstances.
12. The bidder is responsible for any lots returned until received by HKPNC.
13. HKPNC's shall not be liable for any errors or omissions in executing instructions made by the bidder or seller. The bidder who bids in the auction agrees to accept and abide by all the foregoing terms and conditions of sale and personally guarantees payment in full.
14. The respective rights and obligations of the parties shall be governed and construed by Laws of Hong Kong





**HKPNC #40 Public Auction 28<sup>th</sup> July 2024**

**Please bid on my behalf (up to the limits if necessary) for the following lots.**

**I have read and agree to the 'Terms and Conditions' in the catalog.**

**I UNDERSTAND THAT A **15%** PREMIUM WILL BE ADDED TO THE 'HAMMER' PRICE.**

**Name**                      **Address**

---

**Telephone**                      **Fax**                      **E-mail**

---

**Bank and commercial philatelic references**

---

**Signature** \_\_\_\_\_ **Date** \_\_\_\_\_

**(Unsigned bid forms will not be accepted.)**

<b>LOT NUMBER</b>	<b>MAX.BID HK\$</b>	<b>LOT NUMBER</b>	<b>MAX.BID HK\$</b>

**HK\$30 registered airmail shipping fee per shipment, additional charges for carton lot shipments.**

**Dispatch instructions**    **HKPO Express (\$250)**    **Registered Airmail (\$30)**  
 **Office pick up**

**HONG KONG PHILATELIC & NUMISMATIC COMPANY LIMITED**

**Unit 3006, Trendy Centre, 682 Castle Peak Road, Lai Chi Kok, Kowloon, Hong Kong**  
**Tel: 9213 5613 / 9339 2040                      E-mail: info@hkpnc.com**

網上拍賣平台。每項有背圖提供。  
請瀏覽 [auction.hkpnc.com](http://auction.hkpnc.com)

