



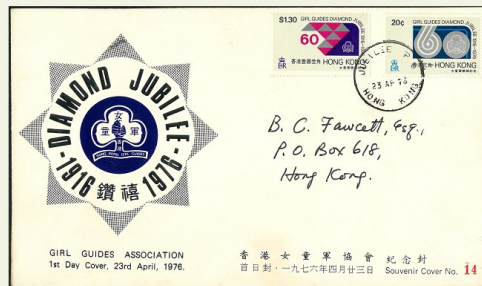
HKPNC



香港郵幣有限公司HKPNC
第39期公開拍賣6月23日舉行
星期日早上10時正開始



Wechat Live Auction



Public Auction #39

39th Public Auction with Wechat live auction



Auction start 10:00am, Sunday 23 June 2024, 6月23日上午10時開始

**FAX OR E-MAIL BIDS SHOULD REACH OUR OFFICE BEFORE
23:59 22nd June 2024 and all bids will forward to 23rd June 2024 public auction.**

Telephone +852 9213 5613 / 9339 2040 E-mail: info@hkpsc.com

Free download pdf catalogue from www.hkpsc.com

Viewing by appointment at our office, please call the numbers below.

Unit 3006, Trendy Centre,
682 Castle Peak Road,
Lai Chi Kok, Kowloon,
Hong Kong

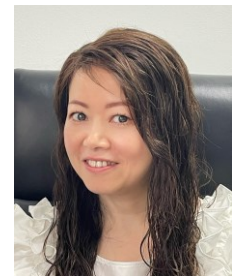


HKPNC

香港郵幣有限公司
Hong Kong Philatelic &
Numismatic Company Limited



Winson Ng
Managing Director



Erica Chan
Sales Director (HK & Mainland)



Calvin Chan
Sales Manager (Mainland)

ESTIMATES

Estimates (starting price) have been given for all lots in this auction. They are meant to reflect our idea of the current market value of the item given its scarcity and condition. Lots may sell only more or same (if only one bid) at starting price. No bid is accepted under the starting price.

BIDDING INCREMENTS (HKD)

100-1,000.....	50
1,000-5,000.....	100
5,000-20,000.....	200
20,000-50,000.....	500
50,000+.....	1,000

Bids outside these increments will be reduced to the nearest increment.

Please view more pictures from www.hkpnc.com

E-MAIL BIDS SHOULD REACH OUR OFFICE BEFORE 23:59 22nd June 2024

PAYMENT

Payment can be made by transfer direct to the HKPNC account at:

Bank: The Hongkong and Shanghai Banking Corporation Limited

Account Name: Hong Kong P and N Co L

Account Number: 747-223 196-838

Swift Code: **HSBCHKHHHKH**

Bank : Shanghai Commercial Bank

Account Name: Hong Kong Philatelic & Numismatic Co LTD

Account Number: 329-82-22293-1

Swift Code: **SCBKHKHH**

Alternative methods of payment which will enable immediate clearance of purchases included cash, bankers' drafts, personal cheques (order in **Hong Kong Philatelic & Numismatic Co Ltd**)

Purchases will be dispatched as soon as possible upon receipt of your written dispatch instructions and full payment for the lots you have bought.

All bid price in HKD。全部拍賣價以港幣計算
本拍賣不包郵費，如需郵遞，需另外付費，
按實際重量或價值計算，最低收費為 30 元港幣。
EMS 最低收費為 250 元港幣。

本拍賣結束後，翌日下午開始買家可到本店交收。
如需要郵寄，郵遞期間一切風險由買家自行承擔
(包括寄失/損壞等)，本公司概不負責。

拍賣佣金按成交價 15% 計算。
如客戶在發單一個星期內付款，
則享有佣金優惠，只需要 12%。

詳細圖片可以上 auction.hkpnc.com 瀏覽

23rd June 2024 10am (lot 1 ~ lot 357)

6 月 23 日上午 10 時開始

HKPNC 公開拍賣現場及微信同步拍賣。
歡迎大家以微信競投拍賣。請加本人及 Calvin 微信拉
入拍賣群。



HKPNC-Winson
中國香港 油尖旺區



Calvin
中國香港 油尖旺區



HKPNC 作为收藏品拍卖中介公司，每項拍賣品会以多年工作经验依據來描述，客戶提供之貨品会以當時物品狀況如实反映。

已成交之貨品如有与描述不符或贗品，請盡快联络本公司職員，本公司会安排第三方認證，如確定描述正確，買家須按照拍賣成交价付款。

如与描述有不符，本公司会联络委託方退货及安排退款。

**** 特別提醒 ****

1/ 请在参拍前仔细看预展 (本公司能提供实物图及缺陷描述、图文并茂)，有任何疑问务必请在开拍前询问，拍賣前都可以给清晰大图及仔细图，請留意拍賣中无法再给仔细图。

請参拍的客戶慎重出价，保证所拍既所得。

2/ 本群全品范畴包含：天生纸质点、原厂纸屑齿点、轻微软印软折、隐指纹、草纸票灯下轻微潮点、个别票印刷胶痕、天生油墨、胶道子、透金、老难题金粉票允许极微氧化、允许胶色润度有正常差异、允许沒有造成票面露白或者背胶受损的轻微划痕，拍賣中不一定会注明描述。

上品范畴包含：有黄、背贴、允许轻微下清水、灯下有潮斑、胶不均匀/脱胶、无胶、无破损无破裂薄无人为修补等均为上品，无明显弱齿的不会描述。

每个人对齿的标准不同，所以齿饱弱自定，只要是上品个别細節不会一一描述。出价参拍表示认可群規，对品相要求严格极致的藏友，要求绝品的請谨慎出价或者不要参拍。如以上理由退货的，概不接受。

3/ 按拍賣慣例，拍賣中主拍有裁断权。保留編輯中错误之勘误权。

4/ 由于网络卡顿，延迟等问题可能看到的出价先后有所不同，以主拍人或群主截图为准，請大家支持与理解。

Lot 1 – 357
23rd June 2024
10am



Hong Kong – QV,KE,KGV,KGVI,QE



港幣起拍價

- | | | |
|----|--|-----------------|
| 1 | 1862 QV 24c no watermark single.no gum and tear fault on bottom right. Fine. High CV. | Start bid 500 |
| 2 | 1862 QV 8c 12c 18c 24c & 48c all used with wing margin. All with tear or perf. fault. | Start bid 800 |
| 3 | 1863 QV 4c greenish grey mint original gum. VF and very difficult shade. Scarce. | Start bid 1,500 |
| 4 | 1863 QV 8c orange. Unused no gum. Good shade. Fine. | Start bid 400 |
| 5 | 1863 QV 12c pair with left side margin. UM slightly toning gum. Scarce. | Start bid 600 |
| 6 | 1863 QV 18c CC VF used in deep shade. Cancelled B62. VFU. | Start bid 500 |
| 7 | 1863 QV 30c Mauve mint single. OG with one light bend. Fine. | Start bid 400 |
| 8 | 1863 QV 2c to 96c 10 values all with right wing margin. Few perf fault. F-VF used. | Start bid 600 |
| 9 | 1863 QV 2c to 96c 11 values all with left wing margin. Included 18c CC. Some perf. fault. F-VF. Scarce. | Start bid 1,000 |
| 10 | 1863 QV 2c to 96c complete set with 18c CC and 96c olive bistre.18c tear and olive bistre with surface thin on right side. Fine set. | Start bid 2,500 |
| 11 | 1863 QV 96c olive bistre used with B62.Reperf. Fine. High CV. | Start bid 800 |



12



13



14



15



16



17



18



19



20



21



22



23

港幣起拍價

- | | | |
|----|---|-----------------|
| 12 | 1876 QV 28c/30c unused no gum. Fine with small thin at top. | Start bid 700 |
| 13 | 1880 QV 5c/8c single, unused no gum. Fine. | Start bid 800 |
| 14 | 1880 QV 5c/18c single, unused no gum. Trimmed perf. at right. Fine. | Start bid 600 |
| 15 | 1880 QV 10c/16c single, unused no gum. One thin spot at right. High CV and scarce. | Start bid 2,000 |
| 16 | 1880 QV surcharge set of 5 all with wing margin. All with fault. Fine. | Start bid 600 |
| 17 | 1880 QV 5c/8c x2. With left and right wing margin. Fine. One with perf. fault. | Start bid 400 |
| 18 | 1880 QV 5c/18c x2. With left and right wing margin. Fine. | Start bid 350 |
| 19 | 1880 QV 10c/12c x2. With left and right wing margin. Fine. One with perf. fault. | Start bid 350 |
| 20 | 1880 QV 10c/16c x2. With left and right wing margin. Fine. One with corner folded. | Start bid 500 |
| 21 | 1880 QV 10c/24c x2. With left and right wing margin. Fine. One with perf. fault. | Start bid 400 |
| 22 | 1891 QV surcharge set of 3 with Chinese character. Plus 50c large character. Mint OG. Fine with some toning spot. | Start bid 1,200 |
| 23 | 1891 QV surcharge set of 3 with Chinese character. Plus 20c shade. Mint OG. Fine with toning gum. | Start bid 1,200 |



24



25



26



27



28



29



30



31



32



33

港幣起拍價

- | | | |
|----|---|-----------------|
| 24 | 1891 QV 14c/30c x2. Both with wing margin. VF used. | Start bid 300 |
| 25 | 1898 QV 10c/30c with Chinese character. SPECIMEN overprint. With 0 in 10 shift up plate constant. Only found in SPECIMEN stamp. VF mint fresh OG. Scarce. | Start bid 1,000 |
| 26 | 1900 QV 2c green block of 4. VF fresh mint never hinge original gum. Minor light red stain affect one stamp. | Start bid 700 |
| 27 | 1900 QV set of 6. Mint never hinge original gum. Even toning on 5c.VF. | Start bid 800 |
| 28 | 1876 QV \$2 and \$3 postal fiscal both mint OG with SPECIMEN overprint. F-VF. | Start bid 1,300 |
| 29 | 1876 QV \$3 postal fiscal mint OG with toning. SPECIMEN overprint inverted. Fine. | Start bid 800 |
| 30 | 1890 QV \$2 postal fiscal. Mint OG with some toning spot. SPECIMEN overprint. Fine. | Start bid 1,000 |
| 31 | 1890 QV \$2 & \$3 both with machine type SPECIMEN overprint. Mint OG with some toning. Fine. | Start bid 1,500 |
| 32 | 1903-04 KE 1c to \$3 plus 1904 6c. All mint original gum. Few with toning gum. F-VF. High CV. | Start bid 1,200 |
| 33 | 1903 KE 1c to \$3 mint OG. No gum or heavy toning gum. Fine. | Start bid 800 |



34



35



36



37



38



39



40



41

港幣起拍價

- | | | |
|----|---|---------------|
| 34 | 1904 KE 30c single and 1921 KGV 2c corner pair, all with plate 1. OG toning. Fine. | Start bid 400 |
| 35 | 1907-11 KE set of 8. Used. Fine. | Start bid 200 |
| 36 | 1921 KGV 1c to \$2 with shade. Total 27 values. Mint OG. Some toning. F-VF. | Start bid 500 |
| 37 | 1921 KGV 3c 5c & 8c all block of 4 with margin or gutter margin. OG. Even toning. Fine. | Start bid 400 |
| 38 | 1938 KGV prewar set of 13. Most value regum included all dollar values. Fine. | Start bid 600 |
| 39 | 1938 KGV \$1 and \$2 in block of 4. Both with margin. Usual toning on \$1. F-VF. | Start bid 600 |
| 40 | 1938 KGV \$5 block of 11. Two stamps with gutter margin. Usual toning gum. UM. | Start bid 500 |
| 41 | 1941 KGV 15x15.5 perf issue set of 6 in pair. UM. 4c and 5c with sheet number. VF. | Start bid 500 |



42



43



44



45



46



47



48



49

港幣起拍價

- | | | |
|----|--|-----------------|
| 42 | 1946 KGVI postwar complete set of 16. UM. Regum on top 4 values. Fine. | Start bid 350 |
| 43 | 1954 QEII 40c blue B/4 x2 with plate number 1. UM. Plus print proof on un-watermark brown paper. VF and scarce. | Start bid 2,000 |
| 44 | 1954 QEII \$2 \$5 x2 all top right corner margin. \$5 with Req. A and M. VF UM. Scarce. | Start bid 1,200 |
| 45 | 1962 QEII Definitive issue 5c to \$20 with extra 50c shade, missing 65c and \$1. Some toning on low values. F-VF UM. | Start bid 800 |
| 46 | 1962 QEII definitive set of 15. VF mint never hinge OG. Most with margin. Minor even toning. Fine. | Start bid 600 |
| 47 | 1962 QEII definitive set of 15. VF fresh UM. | Start bid 700 |
| 48 | 1966 QEII definitive sideways watermark set of 9 in marginal block of 4. UM light even toning. | Start bid 600 |
| 49 | 1973 QEII \$10 upright CA watermark and glazed paper in block of 4. Parcel marking. Two stamps with creased fault. Very rare block of 4. | Start bid 1,500 |



50



51



52



54



53

港幣起拍價

- | | | |
|----|--|-----------------|
| 50 | 1973 QEII \$10 upright watermark and glazed paper. UM with toning spot. Fine and scarce. | Start bid 3,000 |
| 51 | 1970-73 QEII \$20 sideways watermark and glazed paper. With top margin. VF UM. | Start bid 400 |
| 52 | Small collection of glazed paper QEII definitive. All used with parcel marking. Better included two \$10 and large block of \$5 with req. number. Mixed condition. Scarce group. | Start bid 1,000 |
| 53 | 1980-81 QEII definitive 30c 40c 70c 80c complete sheet of 100. All inverted watermark variety. VF fresh UM. | Start bid 4,000 |
| 54 | 1982-1985 mixed watermark block lot. Total 10 blocks with different req. number. Few with toning spot. F-VF. | Start bid 400 |

Hong Kong – Booklet, Postage Due



55



56



57

港幣起拍價

- | | | |
|----|--|---------------|
| 55 | 1923 1 st postage due two sets. Both sideways and upright wmk. Mint OG lightly hinged. VF. | Start bid 600 |
| 56 | 1938 2 nd postage due set to 50c plus later different paper type. 8c in pair with Req. Q. UM. VF. Some toning spot. | Start bid 600 |
| 57 | 1972 4 th postage due set of 4 in B/4. 50c with plate 1 and req. C. UM with some gum toning. Fine. | Start bid 600 |



58



59

港幣起拍價

- | | | |
|----|---|-----------------|
| 58 | 1976 5 th postage due issue. Included chalky paper set of 4 plus no watermark set of 2. Plus mixed paper set of 4. Few toning. F-VF. | Start bid 200 |
| 59 | 1987 Postage due set of 6 design printer proof . Imperf pair. Some with original gum. VF and scarce. | Start bid 2,000 |

Hong Kong – Cancellation



60



61



62



63



64



65



66

港幣起拍價

- | | | |
|----|---|---------------|
| 60 | Small collection of HK QV all with treaty port postmark. Most with small fault to repair. Fine. | Start bid 400 |
| 61 | 1882 QV 2c CA wmk cancelled Foochow Type K CANCELLED marking. VF and scarce. | Start bid 500 |
| 62 | 1891 QV 20c/30c cancelled HOIHOW index A. VF full chop. | Start bid 300 |
| 63 | 1907 KE 4c cancelled NINGPO index C facing upward variety. VF. | Start bid 400 |
| 64 | 1904 KE 4c pair (rejoined), cancelled WEI HAI WAI PORT EDWARD box marking. VF. | Start bid 300 |
| 65 | Group of 8 QV cancelled Japan Yokohama Y1 killer in thin type and blue inking. Fine. | Start bid 350 |
| 66 | Group of 9 QV cancelled Japan Yokohama Y1 killer in thick type and blue inking. Fine. | Start bid 400 |



港幣起拍價

- | | | |
|----|--|---------------|
| 67 | Group of 3 QV cancelled Japan Yokohama Y1 killer in violet inking. Fine and unusual. | Start bid 300 |
| 68 | Group of 5 QV cancelled Japan Yokohama Y1 killer in thin type and black inking. 48c fault. Fine. | Start bid 600 |
| 69 | Group of 8 QV cancelled Japan Yokohama Y1 killer in thick type and black inking. Fine. | Start bid 500 |
| 70 | Group of 9 QV cancelled Japan Yokohama Y1 killer in thick type and black inking. Fine. | Start bid 500 |
| 71 | 1877 QV 16c CC wmk x2. Both cancelled Japan Y1 killer in thick type and black inking. Fine. | Start bid 300 |
| 72 | 1891 QV 50c/48c cancelled Japan Kobe marking. Some trimmed perf. Fine. | Start bid 250 |
| 73 | 1882 QV 5c CA wmk cancelled RUSSIA arrival cds. Fine and scarce. | Start bid 500 |
| 74 | 1891 QV 10c cancelled HK TOO LATE index C cds. VF and full chop. Scarce. | Start bid 600 |
| 75 | 1891 QV 10c cancelled BPO SHANGHAI cds and UK PADDINGTON chop. VF. | Start bid 300 |
| 76 | 1882 QV 5c x2. cancelled BPO AMOY cds plus scarce D. MONCRIEFF WRIGHT / TAKOW AND TAIWANFOO | Start bid 200 |
| 77 | 1912 HK University mobile PO complete date chop CTO on thin paper. VF. | Start bid 400 |

Hong Kong – Japan Occupation



78

港幣起拍價

78 1945 Mr H Da Luz cover franked 5 Yen cancelled Kowloon cds. Cover number 3637 on back. Start bid 450

Hong Kong – Revenue



79



80



81



82



83

港幣起拍價

79 Group of 6 KGVI surcharge revenue. All fine used. Start bid 300

80 Small collection of KGVI B of E, values from 25c to \$25. Some duplicate. All used. F-VF. Start bid 500

81 1950s QEII 15c block of 4 overprint STAMP DUTY. VF fresh UM. Start bid 300

82 1950s QEII 15c block of 8 x2. Both overprint STAMP DUTY, with sheet number. Even toning. Fine. Start bid 800

83 Small collection mint and used QEII revenue included surcharge and two req. block. F-VF. Start bid 300



84



85



86

- | | | |
|----|--|------------------------|
| 84 | Collection of HK revenue from QV to QEII included some document. Mint and used. Viewing recommended. | 港幣起拍價
Start bid 500 |
| 85 | Group of 8 early HK document all franked revenue, F-VF. | Start bid 500 |
| 86 | Group of 12 early HK document all franked revenue, F-VF. | Start bid 600 |

Hong Kong – Error



87



88

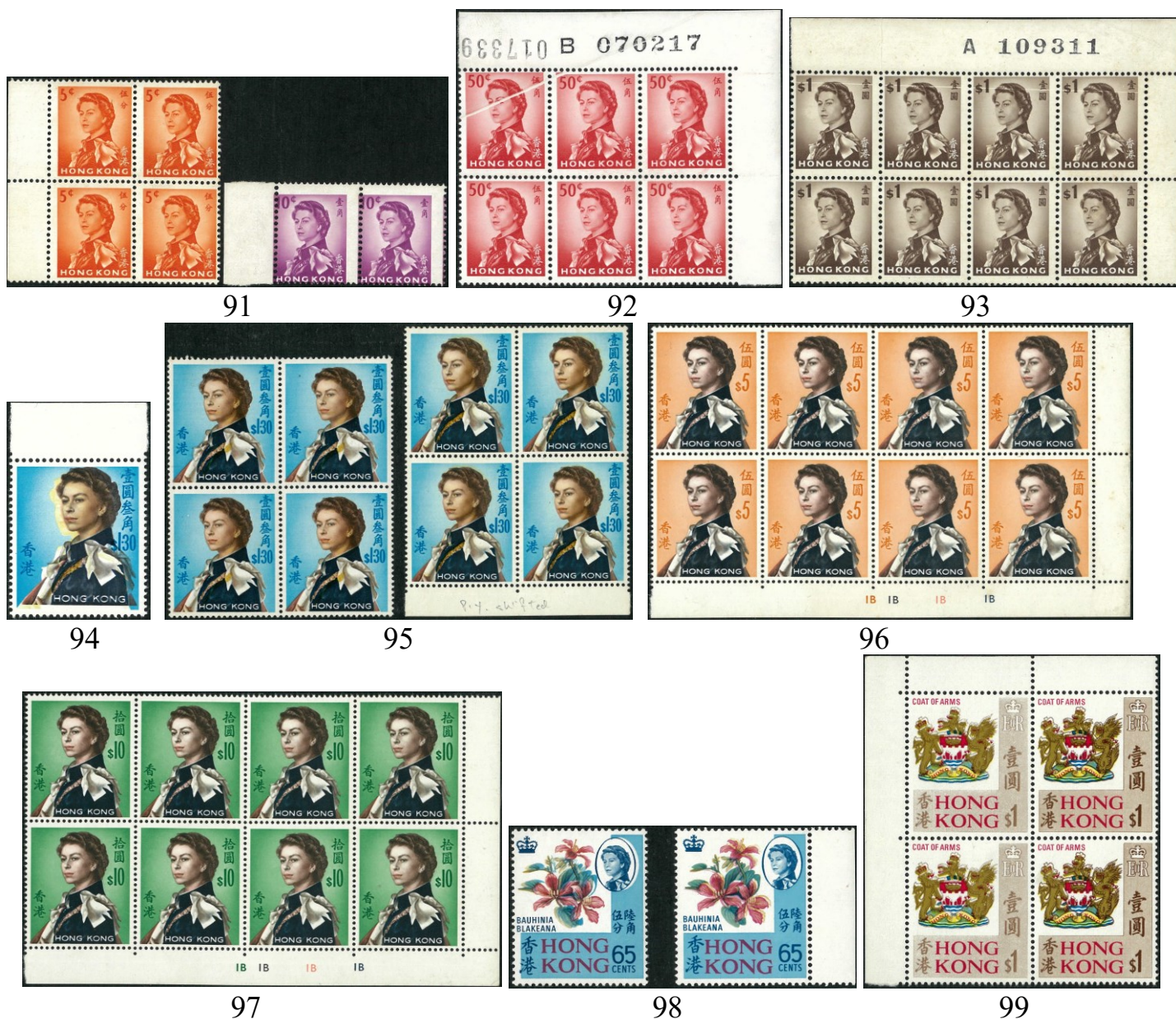


89



90

- | | | |
|----|--|------------------------|
| 87 | 1863 QV 30c vermillion cancelled B62. Inverted watermark variety. Fine used. | 港幣起拍價
Start bid 350 |
| 88 | 1876 QV 28c/30c wing margin cancelled Y1 killer. Surcharge shift down variety. VF and unusual. | Start bid 800 |
| 89 | Small group of KGV plate constant included hair line and broken flower. Single stamp all no gum. F-VF. | Start bid 500 |
| 90 | Small collection of 1954 QEII plate flaw value to \$10. Fresh UM except 20c B/4 which is hinged at top pair. F-VF. | Start bid 400 |



港幣起拍價

- | | | |
|----|---|-----------------|
| 91 | 1962 QEII 5c B/4 and 10c pair all with perf. shift variety. Fine with toning spot. | Start bid 400 |
| 92 | 1962 QEII 50c corner block of 6 with Req. B. Pre-printing paper fold error. Fresh UM. Scarce. | Start bid 500 |
| 93 | 1962 QEII \$1 corner block of 8 with Req. A. White line printing variety. Toning. Fine. | Start bid 400 |
| 94 | 1962 QEII \$1.30 with multiple colour shift variety. VF fresh UM. | Start bid 500 |
| 95 | 1962 QEII \$1.30 block of 4 x2. With colour shift variety. Some toning. Fine. | Start bid 500 |
| 96 | 1962 QEII \$5 corner block of 8 showing ochre and yellow omitted variety. Some toning. Scarce. | Start bid 1,000 |
| 97 | 1962 QEII \$10 corner block of 8 showing ochre and yellow omitted variety. Toning affect few stamps. Fine and scarce. | Start bid 1,500 |
| 98 | 1968 Coat of Arm 65c x2 both with colour shift variety. VF fresh UM. | Start bid 500 |
| 99 | 1968 Coat of Arm \$1 corner block of 4 with dry print colour on left side and colour shift variety. VF fresh UM. | Start bid 600 |



100



101



102



103



104



105



106



107



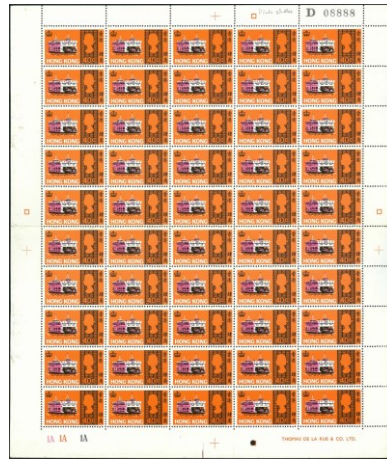
108

港幣起拍價

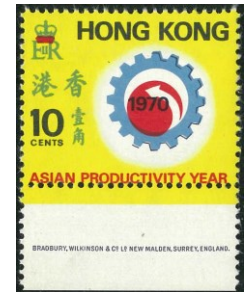
100	1976 commercial cover to Singapore franked QEII 10c (perf shift error) plus two commemorative issue. VF and unusual on cover.	Start bid 300
101	Small collection of minor variety included dry print, bubble printing and perf. shift. Some toning. Fine.	Start bid 600
102	1973 QEII \$5 with dry print variety. VF fresh UM.	Start bid 300
103	1987 QEII \$1 corner plate block of 4 showing blind perf. variety. VF and unusual.	Start bid 800
104	1991 QEII \$1 block of 4 with top margin showing black double print variety. VF fresh UM.	Start bid 600
105	1987 QEII \$5 plate block of 4 with green and black double print variety. VF fresh UM. Scarce.	Start bid 400
106	1987 QEII \$10 block of 4 with right margin showing blind perf. variety. VF fresh UM. Scarce.	Start bid 800
107	1997 Definitive \$0.1 to \$5 MS showing perf. shift variety. Fresh UM.	Start bid 1,500
108	1966 UNESCO 50c corner plate block of 4 showing perf. shift variety. Fresh UM. VF.	Start bid 600



109



110



111



112



113



114



115



116



117



118

港幣起拍價

109	1969 Year of cock pair, red colour omitted variety. Toning. UM. Fine and scarce.	Start bid 1,000
110	1968 Seacraft 40c complete sheet of 50. Showing minor pink colour shift variety. VF UM. Small thin on margin only.	Start bid 800
111	1970 Asian Productivity Year 10c showing red colour shift variety. VF UM.	Start bid 500
112	1968 Coat of Arm 65c and 1988 Public housing MS all showing inverted watermark. MS toning. F-VF.	Start bid 200
113	1985 Future building 50c plate block of 4 showing multiple colour shift variety. VF fresh UM. Rare error.	Start bid 8,000
114	1988 Tramway MS showing perf. shift variety. VF fresh UM. Unusual.	Start bid 1,000
115	1991 Educational \$5 single with missing colour error result value completely missing. VF fresh UM. Rare error.	Start bid 5,000
116	1992 Opera \$1.8 grey colour dry print and shift down variety. VF UM and scarce error.	Start bid 2,500
117	1994 Stamp Exhibition \$10 MS, yellow colour omitted variety. VF fresh UM.	Start bid 500
118	1997 Stamp Exhibition \$10 MS showing print cutting paper fold error. VF and rare.	Start bid 3,800



119



120

港幣起拍價

- | | | |
|-----|--|-----------------|
| 119 | 1997 Year of OX MS showing perf. shift error. Result top two stamps completely imperf. VF UM and rare. | Start bid 5,000 |
| 120 | 2018 Temple of Heaven \$10 MS imperf. error. VF fresh UM. Very rare and new discovery from modern new issue. | Start bid 8,000 |

Hong Kong – Commemorative



121



122



123



124



125



126

港幣起拍價

- | | | |
|-----|---|-----------------|
| 121 | Small collection of early HK commemorative. Mostly UM. F-VF with toning. | Start bid 500 |
| 122 | Small group of early HK commemorative all in used block of 4. VF and unusual group. | Start bid 300 |
| 123 | 1935 Silver Jubilee set of 4. Two sets in mint hinged OG. F-VF. | Start bid 400 |
| 124 | 1946 Victory set with extra stroke plus set with sheet number. One \$1 mint. Other UM. F-VF. | Start bid 400 |
| 125 | 1941 Centenary set of 6 in B/4 all with Req. A sheet number. UM minor toning gum. Scarce. | Start bid 2,000 |
| 126 | 1941 Centenary set of 6. All with margin. Two values with sheet number \$1 lightly hinged. Other UM toning. F-VF. | Start bid 300 |



127

128

129

130



131



132



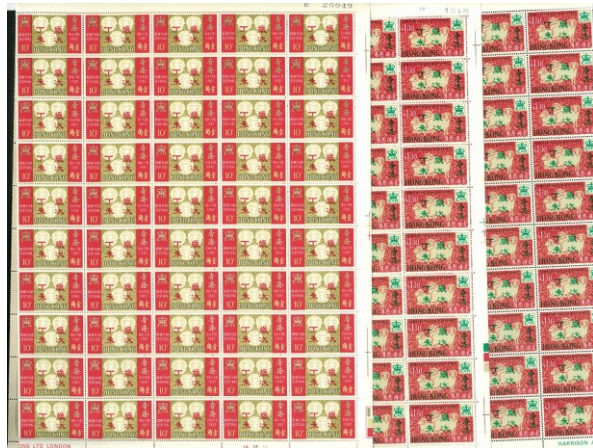
134



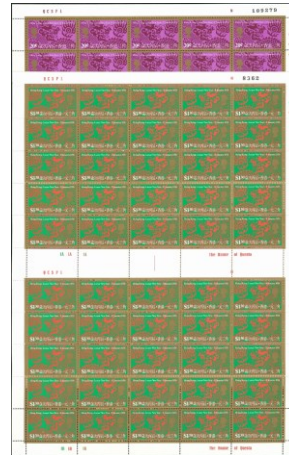
135



136



133



137

港幣起拍價

- | | | |
|-----|---|-----------------|
| 127 | 1948 Royal Silver Wedding set of 2. Fresh mint never hinge OG. White gum. VF. | Start bid 1,300 |
| 128 | 1948 Royal Silver Wedding set of 2. Mint never hinge OG. Some toning. Fine. | Start bid 700 |
| 129 | 1948 Royal Silver Wedding set of 2. Mint never hinge OG. Some toning. Fine. | Start bid 700 |
| 130 | 1948 Royal Silver Wedding set of 2. Mint hinged OG, Toning. Fine. | Start bid 500 |
| 131 | 1965 Churchill set of 4 in B/4 with sheet number.UM but some toning spot. Fine. | Start bid 1,000 |
| 132 | 1966 UNESCO set of 3 in B/4. UM toning gum. VF. | Start bid 300 |
| 133 | 1967 Year of Ram. Complete sheet of 100 sets but separate into two half sheet. Even toning. | Start bid 6,000 |
| 134 | 1967 Year of Ram 12 sets in 3x B/4 format.UM Toning. Fine. | Start bid 700 |
| 135 | 1968 Year of Monkey and 1972 Year of Rat in B/4. Toning spot, fine. | Start bid 450 |
| 136 | 1975 HK Festival set of 3 in block of 4. VF UM. | Start bid 300 |
| 137 | 1976 Year of Dragon complete sheet of 50. Some toning spot. Fine. | Start bid 1,200 |



138



139



140



141



142



143



144



145

港幣起拍價

- | | | |
|-----|--|-----------------|
| 138 | 1975 Year of Rabbit 20 sets most in Block. Toning spot. Fine. | Start bid 500 |
| 139 | 80-90s commemorative B/4. UM. Some with minor toning. F-VF. | Start bid 300 |
| 140 | 1985 Dragon Boat Festival MS x60. VF UM. | Start bid 1,000 |
| 141 | 1988 Year of Dragon MS x100. Some toning spot mainly on edge. Stamp VF. | Start bid 800 |
| 142 | 1988 HK Tramway MS x120. Most with minor toning spot. Fine. | Start bid 800 |
| 143 | 1989 Year of Snake MS x500. Fine with some toning mainly on edge. | Start bid 2,500 |
| 144 | 1987-88 commemorative 8 issue all in gutter margin block of 10. Few with minor toning. F-VF. | Start bid 500 |
| 145 | 1989-90 commemorative 9 issue all in gutter margin block of 10. Few with minor toning. F-VF. | Start bid 500 |

Hong Kong – First Day Cover



146



147



148



149



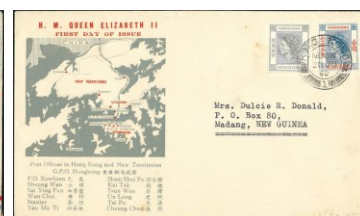
150



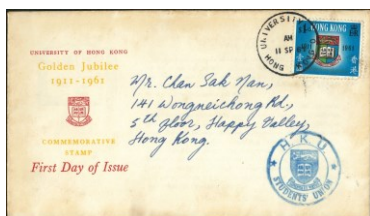
151



152



153



154



155



156

港幣起拍價

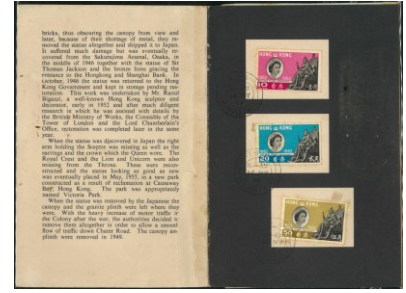
- | | | |
|-----|--|-----------------|
| 146 | 1935 Silver Jubilee set of 4 on FDC. Unaddressed. VF and rare. | Start bid 2,000 |
| 147 | 1938 KGVI definitive FDC. Post local. Fine. | Start bid 300 |
| 148 | 1937 Coronation FDC x4. Fine. | Start bid 400 |
| 149 | 1937 Coronation FDC plus 1946 Victory FDC. F-VF. | Start bid 550 |
| 150 | 1937 Coronation FDC plus two 1953 coronation FDC. F-VF. | Start bid 350 |
| 151 | 1930-60s Two first flight cover. VF. | Start bid 350 |
| 152 | 1954 Coronation FDC short set franking from 5c to \$2. Post Singapore. VF. | Start bid 600 |
| 153 | 1960 new definitive 65c \$1.3 on FDC. Doubtful chop. Sold AS-IS. | Start bid 200 |
| 154 | 1961 HK University \$1 on FDC with large blue HKU Student Union chop. Back with another type HKU blue chop. Toning on cover. Fine. | Start bid 400 |
| 155 | Group of 4 HKU and HKCU FDC. Two with large blue commemorative chop. F-VF. | Start bid 400 |
| 156 | 1962 QEII definitive FDC complete set franking on small size format FDC. VF and scarce. | Start bid 3,000 |



157



158



159



160



161



162



163



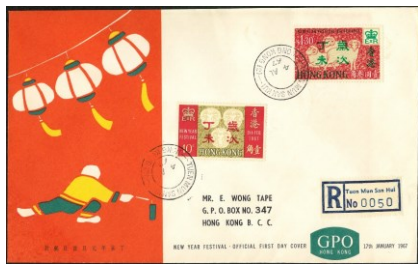
164



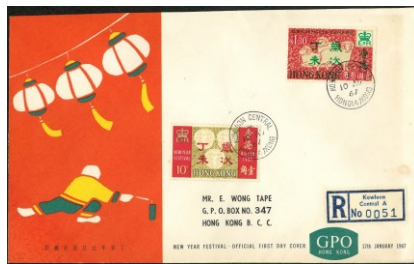
165

港幣起拍價

- | | | |
|-----|--|-----------------|
| 157 | 1962 QEII definitive complete set franking on large size FDC. VF. | Start bid 2,500 |
| 158 | 1962 Stamp Centenary 20c franking on CPA FDC (Withdrawn version). VF. | Start bid 500 |
| 159 | 1962 Stamp Centenary booklet page franked set of 3 cancelled TAI O opening PO cds with inverted year 62 variety. Fine and very scarce. | Start bid 600 |
| 160 | Collection of 17x 1962 Stamp Centenary on CPA FDCs. All different branch office cds better included Sha Tau Kok, Peng Shan etc. Very interest lot. | Start bid 2,000 |
| 161 | Collection of early HK FDC Mainly GPO. F-VF. | Start bid 500 |
| 162 | Small group 8 GPO FDC from 1960s F-VF. | Start bid 400 |
| 163 | 1963 Red Cross set of 2 on CPA FDC. Fine and very scarce. | Start bid 1,000 |
| 164 | Group of 3 early 60-70s non-GPO FDC. F-VF. | Start bid 450 |
| 165 | 1967 Year of Ram GPO cover cancelled opening of Fanling post office cds date 13-MY-1967, Fine. | Start bid 250 |



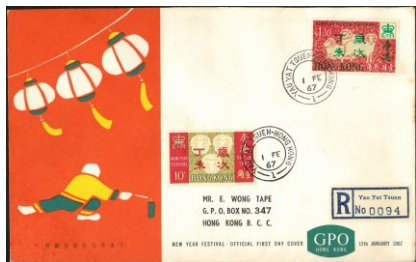
166



167



168



169



170



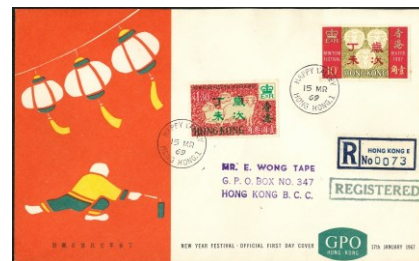
171



172



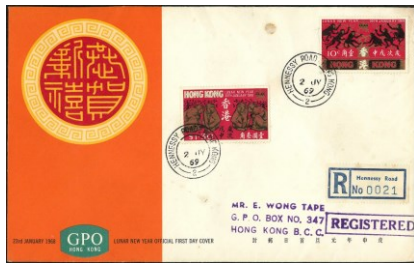
173



174

港幣起拍價

166	1967 Year of Ram GPO cover cancelled opening of Tuen Mun San Hui post office cds, Fine.	Start bid 250
167	1967 Year of Ram GPO cover cancelled opening of Kowloon Central post office cds, Fine.	Start bid 250
168	1967 Year of Ram GPO cover cancelled opening of Kowloon post office cds, Fine.	Start bid 250
169	1967 Year of Ram GPO cover cancelled opening of Yau Yat Tsuen post office cds, Fine.	Start bid 250
170	1968 seacraft CPA GPO cover. Both short set franking. F-VF. Scarce.	Start bid 1,000
171	1968 seacraft GPO FDC. Cancelled HK cds. Unaddressed. Fine.	Start bid 300
172	1967 Year of Ram GPO cover cancelled opening of Rennie's Mill Village post office cds, Fine.	Start bid 250
173	1968 Human Right complete sheet on two separated large size FDC. Fine and unusual.	Start bid 800
174	1967 Year of Ram GPO cover cancelled opening of Happy Valley post office cds, Fine.	Start bid 250



175



176



177



178



179



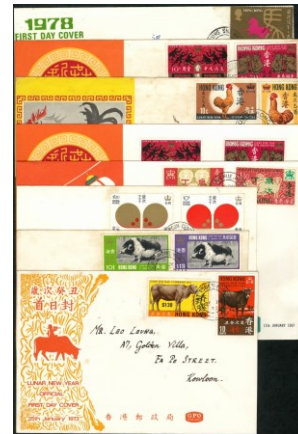
180



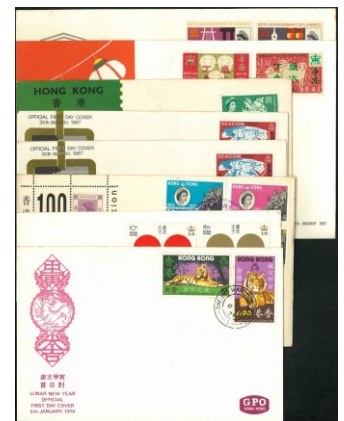
181



182



183



184

港幣起拍價

- | | | |
|-----|---|-----------------|
| 175 | 1967 Year of Ram GPO cover cancelled opening of Hennessy Road post office cds, Fine. | Start bid 250 |
| 176 | 1969 Year of Cock x4. CPA FDC. F-VF. | Start bid 1,500 |
| 177 | 1969 HK Chinese University 40c on special HKCU short size FDC. Cancelled SHATIN cds plus large blue chop. Toning around and rare FDC. | Start bid 1,000 |
| 178 | 1969 HK Chinese University 40c on special HKCU short size FDC. Cancelled Changsha Street cds. Toning. Fine and scarce. | Start bid 500 |
| 179 | Group of 4 early HK CPA FDC. All toning. One UPU fault. | Start bid 400 |
| 180 | Small collection of HK FDC from 60-70s, some with sheet number or plate margin. F-VF. | Start bid 500 |
| 181 | HK early FDC x7. 1960-70s All unaddressed. F-VF. | Start bid 400 |
| 182 | 1972 silver wedding set of 2 on two non-GPO FDC in two different shade. VF. Unusual. | Start bid 300 |
| 183 | Early HK 1 st round Lunar new year FDC x8. Some toning. F-VF. | Start bid 500 |



185



186



187



188



189



190



191



192



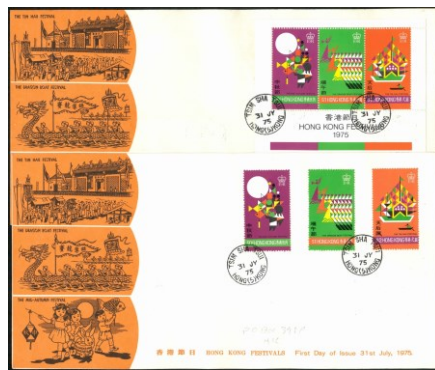
193

港幣起拍價

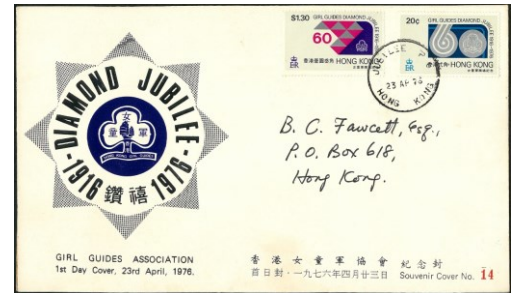
- | | | |
|-----|---|---------------|
| 185 | Group of 6 non-GPO FDC from 60-70s, all unaddressed. F-VF. | Start bid 400 |
| 186 | Collection of HK GPO FDC. From 60-70s. F-VF. | Start bid 400 |
| 187 | Collection of early HK CPA FDC from 60-70s. Mixed condition. | Start bid 900 |
| 188 | HK 60-90s 6 associations issue FDC. F-VF. | Start bid 550 |
| 189 | 1972 Year of Rat CPA FDC x2. Fine. | Start bid 300 |
| 190 | 1973 QEII definitive FDC franked complete set. Unaddressed. Cancelled HK cds. Fine. | Start bid 600 |
| 191 | 1973 QEII definitive FDC franked complete set. Post local. Cancelled Yau Jat Tsuen cds. Fine. | Start bid 600 |
| 192 | 1974 Art Festival MS on GPO FDC. Cancelled Shek Kip Mei cds. Light toning. Fine. | Start bid 500 |



194



195



196



197



198



199



200



201



202

港幣起拍價

- | | | |
|-----|--|-----------------|
| 194 | 1974 Art Festival CPA FDC x3. All different colour design. Fine. | Start bid 400 |
| 195 | 1975 HK Festival stamp and MS on two CPA FDC. Orange colour design. VF. | Start bid 500 |
| 196 | 1976 Diamond Jubilee set of 2 on special FDC signed and printed number (14) VF. Rare. | Start bid 1,500 |
| 197 | Group of 3 definitive FDC from 1982 last day and first day covers. Fine. | Start bid 300 |
| 198 | 1983 Commonwealth Day set of 4 on CPA FDC. VF. | Start bid 400 |
| 199 | 1985 Dragon boat Festival stamp plus MS on one large size CPA FDC. VF. Unusual. | Start bid 400 |
| 200 | 1984 Cathay Pacific special gift FDC franked complete set of stamps cancelled KAI TAK cds. Light toning and scarce. | Start bid 1,000 |
| 201 | Two Cathay Pacific commercial envelope use as FDC. VF and unusual. | Start bid 300 |
| 202 | 1985 New building set of 4 on HSBC headquarter thin paper airmail FDC. Cancelled HK cds. Some toning spot and very scarce FDC. | Start bid 800 |



203



204



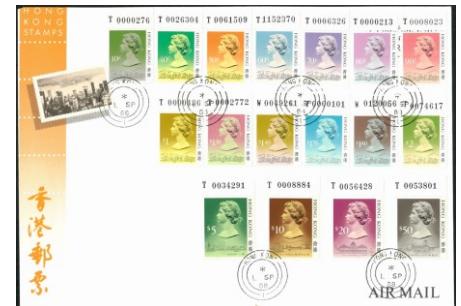
205



206



207



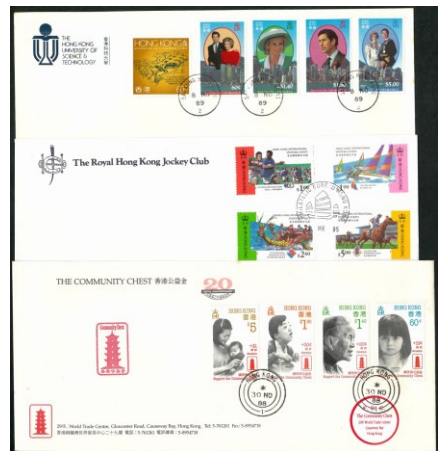
208



209



210



211

港幣起拍價

- | | | |
|-----|---|-----------------|
| 203 | 1985 Exchange Square large size FDC plus invitation card. VF. | Start bid 1,700 |
| 204 | Group of 5 large size definitive FDC.80-90s. Fine. | Start bid 400 |
| 205 | 1987 Definitive set of 15 plus coil on CPA FDC. VF and scarce. | Start bid 400 |
| 206 | 1987 Definitive set of 15 on HKPU FDC. All with sheet number. Some toning spot. Scarce. | Start bid 600 |
| 207 | 1988 Definitive set of 17 on CPA FDC. Cancelled HK PB chop. VF. Scarce. | Start bid 1,000 |
| 208 | 1988 Definitive set of 17 on HKPU FDC. All with sheet number. VF and rare. | Start bid 1,500 |
| 209 | 1988 Definitive set of 17 plus 87 coil. On GPO FDC. Fine and scarce. | Start bid 500 |
| 210 | 1989 Definitive set of 16 plus coil. On GPO FDC. Fine with toning spot. | Start bid 350 |
| 211 | Three non-GPO issue FDC. All complete set franking. Some unusual type. VF. | Start bid 300 |



212



213



214



215



216



217



218



219



220

港幣起拍價

- 212 1989 Royal Visit special FDC with 22K gold plate. Original folder. F-VF. Start bid 200
- 213 1992 Year of Monkey frama label \$0.1-\$5 01+02 machine on 10 CPA FDC. VF. Start bid 600
- 214 1991 Year of Ram \$0.1-\$5 01 machine on 10 CPA FDC. VF and scarce. Start bid 800
- 215 1993 Year of Cock frama label \$0.1-\$5 01+02 machine on 10 CPA FDC. VF. Start bid 600
- 216 1994 Year of Dog frama label \$0.1-\$5 01+02 machine on 10 CPA FDC. VF. Start bid 600
- 217 1991 Definitive set of 16 on HKPU FDC. All with sheet number. Toning spot. Scarce. Start bid 600
- 218 1991 Definitive set of 16 on CPA FDC. Fine with light toning and scarce. Start bid 400
- 219 1994 BOC new headquarter & new banknote issue FDC x3. VF. Start bid 300
- 220 Collection of 80-90s CPA FDC. All VF. Start bid 400



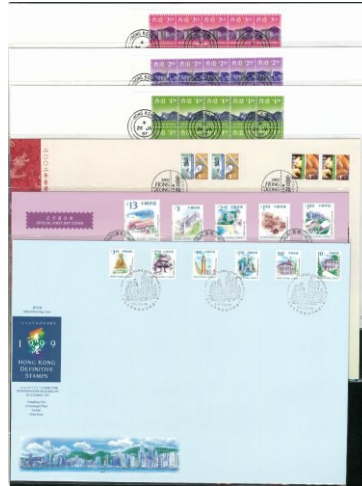
221



222



223



224



225



226



227

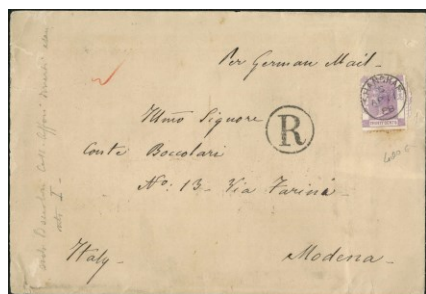


228

港幣起拍價

- | | | |
|-----|---|---------------|
| 221 | Collection of large size definitive FDC. 97-2000s. VF. | Start bid 400 |
| 222 | 1992 & 2009 Association FDC x2. VF. | Start bid 200 |
| 223 | Collection of 2000s Lunar year GPO FDC. Some with high value MS franking. VF. | Start bid 800 |
| 224 | 1997-2002 Coil and booklet on large size FDC. VF. | Start bid 350 |
| 225 | 1999 definitive booklet plane on GPO and CPA FDC. VF. | Start bid 300 |
| 226 | 2018&2024 Jin Yong stamp and MS on CPA FDC. All VF. | Start bid 300 |
| 227 | 2023 A Tribute to Healthcare workers FDC x3 VF and limited issue. | Start bid 250 |
| 228 | Collection of modern GPO FDCs. From 90-2000s. F-VF. | Start bid 250 |

Hong Kong – Postal History



229



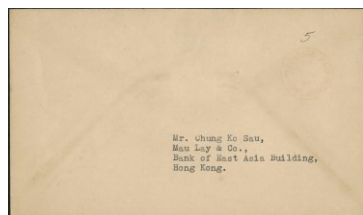
230



231



232



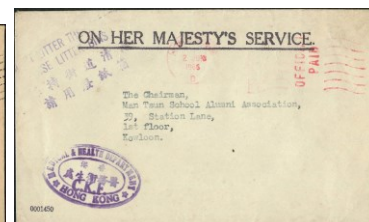
233



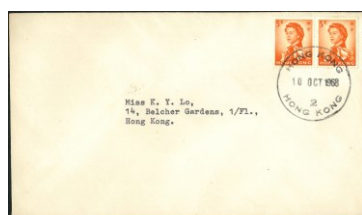
234



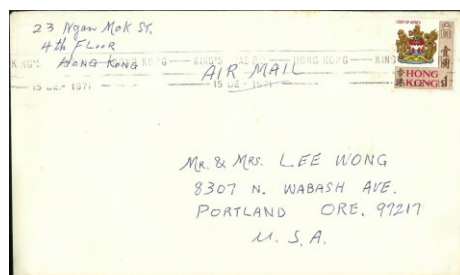
235



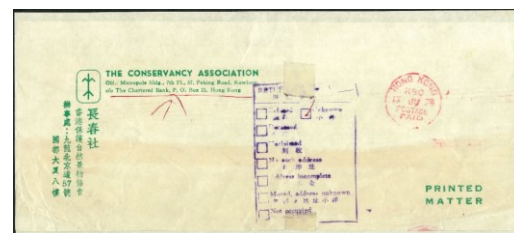
236



237



238



239

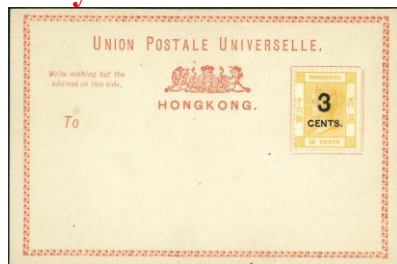
港幣起拍價

- | | | |
|-----|---|-----------------|
| 229 | 1888 registered cover post to Italy. Franked QV 30c cancelled Shanghai index C cds date 11-AP-1888. Circle R alongside. Back with HK cds and Italy arrival marking. Fine. | Start bid 2,000 |
| 230 | 1896 Cover post to USA franked QV 10c pair cancelled CANTON index star cds. Back with arrival marking. Edge fault. Fine. | Start bid 800 |
| 231 | 1901 Bamboo type hand painting cover post to UK. Franked QV 4c cancelled large KB Kowloon branch type I cds date 30-DE-1901, last day recorded of this type I cds. VF and Scarce. | Start bid 1,500 |
| 232 | 1900 QV 10c on cover to USA plus 190? Cover post to South Africa franked QV 4c. Fine. | Start bid 500 |
| 233 | 3-SEP-1948 typhoon postage paid number 2 chop on cover post local. Fine. | Start bid 300 |
| 234 | 1948 airmail cover to Germany British zone franked KGVI 8c x10. With instructional marking. Fine. | Start bid 250 |
| 235 | 1950 Cover post local franked UPU 10c cancelled machine chop. 1 st day usage 27-Jun 1950. Fine and scarce. | Start bid 400 |
| 236 | 1966 OHMS cover post local with Official Paid marking plus 'Don't Litter the Streets Use Litter Bin' slogan marking. VF and scarce type. | Start bid 600 |
| 237 | 1968 cover post local franked QEII 5c pair cancelled Hong Kong 2 Hong Kong cds. Unusual. | Start bid 300 |
| 238 | 1971 cover to USA franked \$1 cancelled long Kings Road machine type cds. VF and scarce. | Start bid 1,200 |
| 239 | 1974 commercial wrapper from Conservancy Association cancelled red postage paid KSO Kowloon Sorting office marking. VF and scarce. | Start bid 700 |

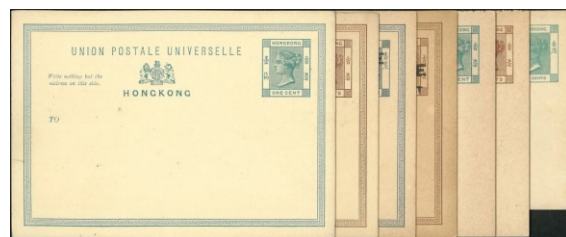
Hong Kong – Postal Stationery



240



241



242



243



244



245



246



247



248



249

港幣起拍價

- | | | |
|-----|--|-----------------|
| 240 | 1879 QV 5c/18c postal card unused. VF. | Start bid 1,500 |
| 241 | 1879 QV 3c/16c postal card unused. VF. | Start bid 1,500 |
| 242 | Small collection of QV postal card and postal envelope. All unused. F-VF. | Start bid 500 |
| 243 | Small lot KE KGV postal cards. Two with reply. F-VF unused. | Start bid 300 |
| 244 | 1896 QV 1c postal card uprate QV 2c cancelled HK cds. Card post to Germany. Fine. | Start bid 300 |
| 245 | Group of 3 QV KE postal cards. All postally used. 4c surcharge card with fault. Fine. | Start bid 300 |
| 246 | 1951 KGVI 4c postal card post local uprate KGVI 1c cancelled KOWLOON cds. VF. | Start bid 300 |
| 247 | 1902 QV 1c postal card to Berlin. Uprate QV 4c cancelled HK cds. With arrival cds. Fine. | Start bid 300 |
| 248 | 1903 KE 2c 4c 10c postal envelope. All VF unused. | Start bid 600 |
| 249 | 1966 Official Christmas aerogramme registered to Taiwan. Franked UNESCO 5 stamps cancelled MAN YEE ARCADE cds. Back with Taiwan arrival cds. VF. | Start bid 300 |

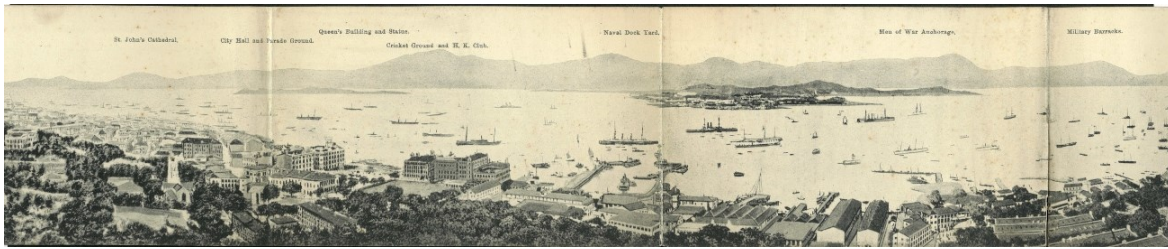
Hong Kong – Post Card



250



251



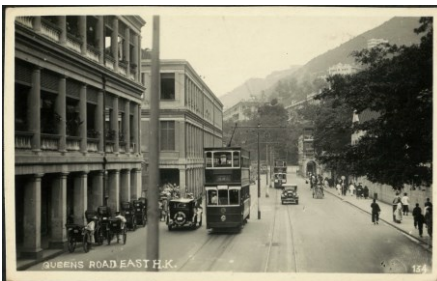
252



253



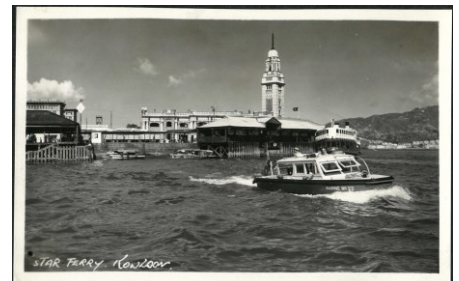
254



255



256



257

港幣起拍價

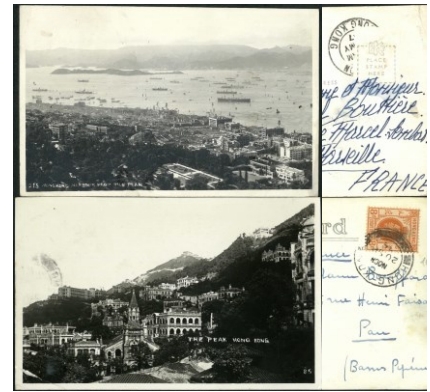
- | | | |
|-----|---|---------------|
| 250 | 1908 Port Arthur picture postcard franked HK KE 4c cancelled HK cds and DOC perfin. Fine. | Start bid 400 |
| 251 | Hong Kong 1908 Indian Temple postcard franked China CIP 2c cancelled Canton cds. Fine. | Start bid 300 |
| 252 | Hong Kong 1910s panorama of HK 4 fold postcard. Unused. Fine. | Start bid 500 |
| 253 | 1900s-20s postcard all franked KE or KGV 4c. All postally used. Fine. | Start bid 350 |
| 254 | 1940s real photo postcard showing Wanchai district with train and bus. Unused. VF and scarce. | Start bid 800 |
| 255 | 1940s real photo postcard showing Queens road East with train. VF unused. | Start bid 500 |
| 256 | 1940s real photo postcard showing Supreme court. VF unused. | Start bid 400 |
| 257 | 1950s real photo postcard showing Star Ferry in TST station. VF unused and scarce. | Start bid 400 |



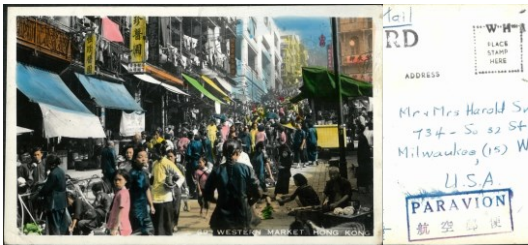
258



259



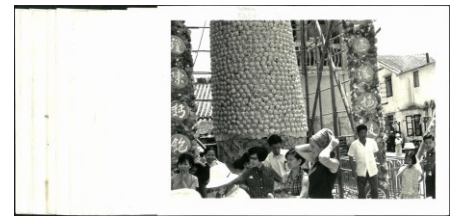
260



261



262



263

- | | | |
|-----|--|------------------------|
| 258 | 1950 real photo postcard showing early BOC and HSBC headquarter VF unsued. | 港幣起拍價
Start bid 400 |
| 259 | 1940-50s real photo postcard showing busy street in HK Celebrate National day of double Ten festival. VF unused. | Start bid 300 |
| 260 | Two real photo postcards both postally used. One stamp missing. F-VF. | Start bid 300 |
| 261 | 1950s real photo hand tinted postcard showing Western Market HK, postally used to USA. Airmail. Stamp missing. Scarce. | Start bid 500 |
| 262 | 1950s Two real photo postcards. Hand tinted. VF unused. | Start bid 450 |
| 263 | 1968 group of 30x small size photo (6x9cm) showing Cheung Chau Bun Festival. With original photo shop paper bag. VF. | Start bid 400 |

Hong Kong – Collection



264

- | | | |
|-----|---|--------------------------|
| 264 | Collection of QV spiro forgery complete sheet of 25. 2c 4c 6c 8c 12c 16c 18c 24c 30cx2 shade and 16c/18c total 11 sheets. Hold on album sheet. VF and scarce. | 港幣起拍價
Start bid 3,000 |
|-----|---|--------------------------|



265



266



267



268



269



270

港幣起拍價

- | | | |
|-----|---|-----------------|
| 265 | Hong Kong collection of used definitive issue from QV to KGVI. Some postmark interest. Mixed condition. | Start bid 500 |
| 266 | Small collection of HK booklet and coin. Plus two high value definitive. VF. | Start bid 400 |
| 267 | Small collection of definitive set from 1975 1982 and 1983. All UM. VF. | Start bid 600 |
| 268 | Small collection of used HK early definitive, mainly used plus some block. F-VF. | Start bid 300 |
| 269 | Collection of HK definitive and commemorative issue. 1968 Monkey 10c complete sheet. 1981 housing MS inverted watermark x2 (toning). Plus 1988 definitive set in B/4 (UM minor toning). Fine. | Start bid 1,300 |
| 270 | Small lot Hong Kong postal card and covers. Included one incoming cover with postage due. F-VF. | Start bid 300 |

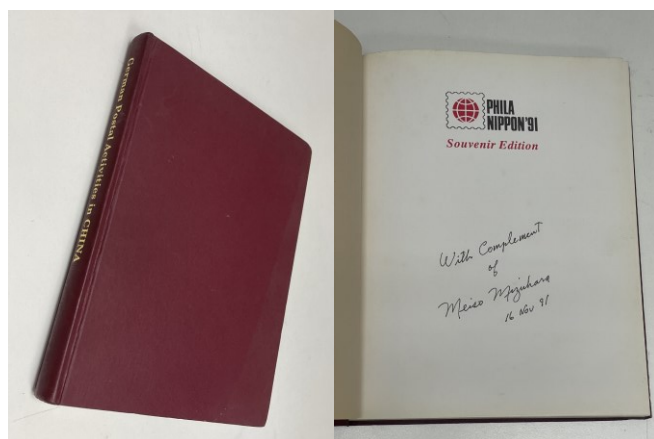
Miscellaneous Items



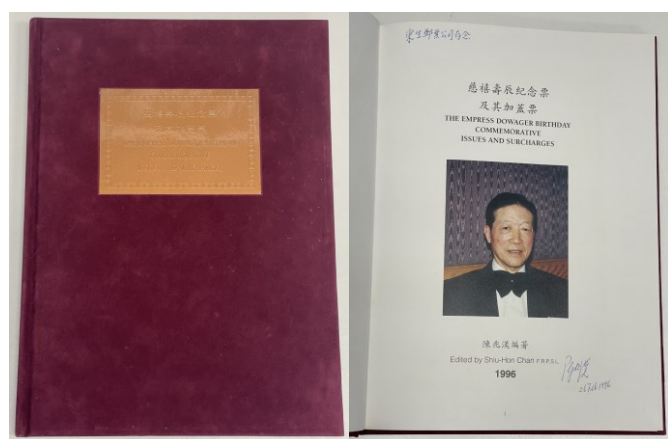
271



272



273



274

- | | | |
|-----|---|------------------------|
| 271 | 香港 60~70 年代。周生金行 30 元礼券。上品。 | 港幣起拍價
Start bid 300 |
| 272 | 香港 60~70 年代。美丽华金行 30 元礼券。上品。 | Start bid 300 |
| 273 | 1991 年日本邮趣出版社发行。1991 年日本国际邮展水源明窗德国客邮集一册。有水源明窗亲笔签名。品相佳。 | Start bid 400 |
| 274 | 1996 年发行。陈兆汉 FRPSL 编著。慈寿纪念票及其加盖票。陈兆汉亲笔签名版。品相佳。当年发行价为港币\$1800。 | Start bid 500 |

Worldwide



275



276



277

- | | | |
|-----|-----------------------------------|------------------------|
| 275 | 台湾 18 宝新全。有贴印。一枚\$1 有薄。原胶。中~上品。 | 港幣起拍價
Start bid 500 |
| 276 | 台湾 18 宝新全。\$1 及 \$4.5 有微黄。余全品。 | Start bid 700 |
| 277 | 台湾四皇新全。原胶有小污。\$2 及 \$3.2 面有花。中上品。 | Start bid 600 |



278



279



280



281



282



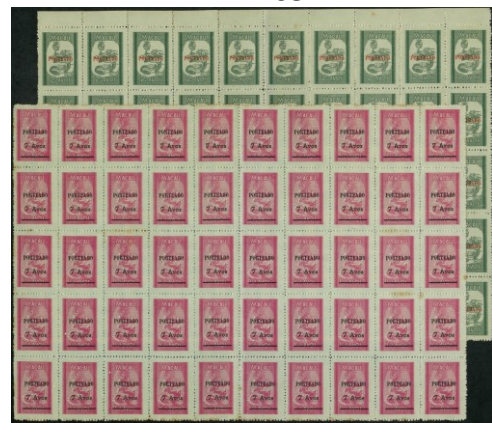
283



284



285



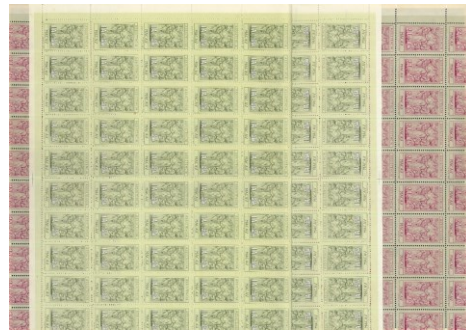
286

港幣起拍價

- | | | |
|-----|---|------------------|
| 278 | 台湾生肖龙, 蛇及马新全各 100 套。无胶。中上品。 | Start bid 500 |
| 279 | 台湾山水画新全共 49 套。齿间有折。有黄上品。 | Start bid 350 |
| 280 | 台湾生肖虎年新全共 100 套。原胶。微黄上品。 | Start bid 300 |
| 281 | 台湾早期纪念票一份。共 36 套。全部无胶新票。中品。 | Start bid 300 |
| 282 | 澳门 1911 早期局长签字票 1a 2a 新全。上品。 | Start bid 5,500 |
| 283 | 澳门 1913 加路士一世加盖幼字共和新票 11 全。部份有贴印。上品。 | Start bid 7,000 |
| 284 | 澳门 1914 欠资票第三组加盖幼字共和。新票 11 全有贴印。上品。 | Start bid 12,000 |
| 285 | 澳门 1949 年国际邮联成立 75 周年。角位八方连。胶不均。及一套航空票新全无胶。中上品。 | Start bid 500 |
| 286 | 澳门 1951 年欠资邮票 2a 及改直 7a 各 50 方连。有黄上品。 | Start bid 500 |



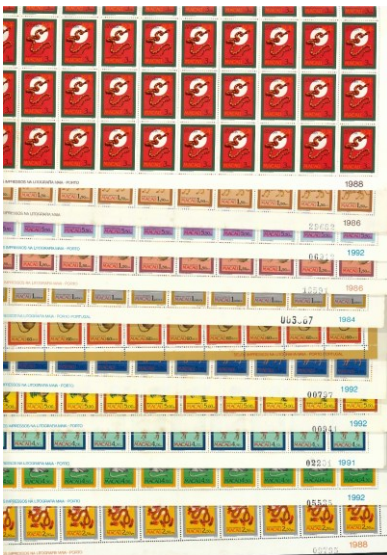
287



288



289



290



291



292



293

港幣起拍價

- 287 澳門 1961 年慈善印花第七組。 1a 2a 10a 大方連共 250 枚。部份有折。上品。 Start bid 500
- 288 澳門 1961 年慈善印花第七組。 1a 半版 x2, 2a 全版。共 200 枚新。上品。 Start bid 400
- 289 澳門早期印花改值 10a 及 20a 各半版 50 枚。上品。 Start bid 500
- 290 澳門 1983-95 第一組生肖版票大全。大部份有黃。延版。上品。 Start bid 6,000
- 291 澳門 1951 年實寄封寄香港。貼澳門風景票三枚及防癆票 10a。上品。 Start bid 1,200
- 292 澳門 1995 年 12 生肖小版張首日封兩件。其中一件黃色上移。上品。 Start bid 5,000
- 293 一箱各時期世界各地新舊郵票。包括皇室紀念郵票。中至近代。 Start bid 500
** 約 15KG。只限香港公司交收。不設郵寄 **

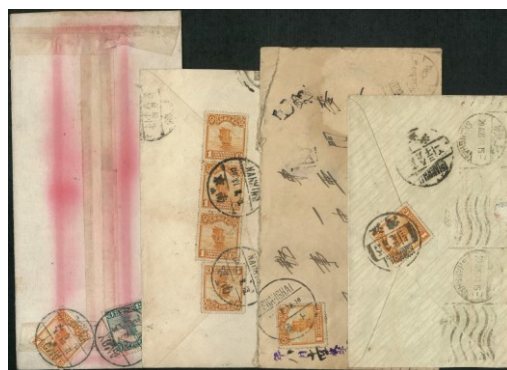
China



294



295



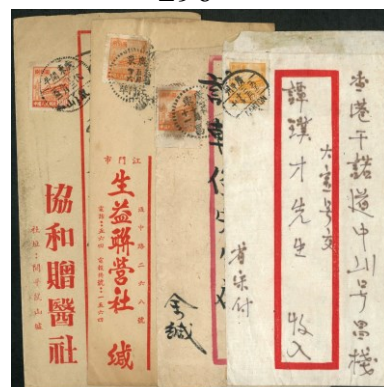
296



297



298



299



300



301



302



303

港幣起拍價

- | | | |
|-----|---|---------------|
| 294 | 1905 北京明信片寄法国。贴蟠龙 4 分。销北京印。有到达印。上品。 | Start bid 350 |
| 295 | 民国时期 3 件私人信局。红带封。上品。 | Start bid 250 |
| 296 | 民国帆船实寄封 4 件。上品。 | Start bid 300 |
| 297 | 民国实寄封 3 件。其中 1 件贴航空票寄香港。上品。 | Start bid 550 |
| 298 | 民国实寄封 3 件。全部寄澳门。全部有澳门到达印。上品。 | Start bid 300 |
| 299 | 新中国 50 年代实寄封 4 件。全部贴天安门 800 分寄香港。全部销广东不同地方印。上品。 | Start bid 400 |
| 300 | 新中国 60-70 年代实寄封 9 件。全部贴普 8 工农兵。其中 2 件 8 分为上海版。上品。 | Start bid 400 |
| 301 | 新中国军人贴用信件 8 件。销不同军人邮资已付印。上品。 | Start bid 350 |
| 302 | 1878 大龙 3 分薄纸旧票 1 枚。背有薄。中上品。 | Start bid 600 |
| 303 | 1883 大龙厚纸旧 5 分 1 枚。销天津印。上品。 | Start bid 800 |



304



305



306



307



308



309



310



311



312



313

港幣起拍價

- | | | |
|-----|--|------------------|
| 304 | 1897 小龙改值新 3 全。原胶有黄有贴印。上品。 | Start bid 1,200 |
| 305 | 1897 小龙大字改值 5 分四方连。原胶有黄。上品。 | Start bid 7,000 |
| 306 | 1893 工部汉口旧票 5 全。上品。 | Start bid 300 |
| 307 | 1898 蟠龙 12 全加盖 SPECIMEN 样票。贴于纸上。部份票有氧化。罕有。 | Start bid 10,000 |
| 308 | 1902-03 蟠龙无水印新票 21 全。原胶部份有黄。有贴印。上品。 | Start bid 7,000 |
| 309 | 蟠龙旧票 32 枚至 1 元。销不同地方印。上品。 | Start bid 500 |
| 310 | 蟠龙旧票及剪片 1 份。销不同地方印。上品。 | Start bid 500 |
| 311 | 1904 蟠龙欠资新票 6 全。原胶。上品。 | Start bid 400 |
| 312 | 1912 蟠龙加盖中华民国 15 全。除 2 元无胶。其余原胶有贴印。上品。 | Start bid 6,000 |
| 313 | 1912 蟠龙加盖中华民国大国字 1 套。及半分到盖 1 枚。有贴印。上品。 | Start bid 350 |



314



315



316



317



318



319



320



321



322

港幣起拍價

- | | | |
|-----|--|------------------|
| 314 | 1912 蟠龙加盖楷书中华民国 15 全。新票原胶有贴印。上品。 | Start bid 9,000 |
| 315 | 民国 1913 帆船新票 20 全。原胶有贴印。上品。 | Start bid 15,000 |
| 316 | 1913 宫门黄甘圆 SPECIMEN 样票 1 枚。无胶。有 1 小针孔。中上品。 | Start bid 10,000 |
| 317 | 1911 蟠龙加盖西藏新票 11 全。原胶有贴印。上品。 | Start bid 13,600 |
| 318 | 新中国纪 1 原版新票 6 方连。微黄。上品。 | Start bid 800 |
| 319 | 新中国纪 9 原版新票 4 连。有黄。上品。 | Start bid 800 |
| 320 | 纪 106M 盖销 1 枚。有贴印及软折。上品。 | Start bid 4,500 |
| 321 | 纪 77 盖销版票 3 全。折版。原胶有黄。上品。 | Start bid 2,200 |
| 322 | 纪 81 盖销版票 2 全。折版。原胶微黄。上品。 | Start bid 5,000 |



323



324



325



326



327



328



329



330

港幣起拍價

- | | | |
|-----|--|---------------|
| 323 | 新中国特 2 连版。双连。(4-4)有折。中至上品。 | Start bid 250 |
| 324 | 新中国特 38 金鱼 12 全。除(12-8)信销外。其余盖销。无胶。上品。 | Start bid 400 |
| 325 | 文 11 新票 6 枚。微黄。上品。 | Start bid 500 |
| 326 | 文 19 双连带厂铭。原齿孔有折。上品。 | Start bid 600 |
| 327 | 新中国红灯记试印样票双连。有软折。上品。 | Start bid 500 |
| 328 | 新中国 J8 16 全。数枚票有微黄。上品。 | Start bid 500 |
| 329 | 新中国 T 票 5 套。其中 T12 为 3 连。全部带厂铭。微黄。上品。 | Start bid 500 |
| 330 | 新中国 T 票新票 9 套。其中 T64 为方连。微黄。上品。 | Start bid 600 |



331



332



333



334



335



336



337



338

港幣起拍價

- | | | |
|-----|---------------------------------------|---------------|
| 331 | 新中国 T44 新票 16 全。带纸边。微黄。上品。 | Start bid 450 |
| 332 | 新中国 J135M。原包 100 枚。上品。 | Start bid 800 |
| 333 | 1994-18M 及 1998-23M。原包各 100 枚。未开封。 | Start bid 400 |
| 334 | 1995-12M 及 1995-19M。原包各 100 枚。未开封。 | Start bid 450 |
| 335 | 1996-4M 及 1996-20M。原包各 100 枚。未开封。 | Start bid 800 |
| 336 | 新中国 J39 1 版。J125 1 版及 J160 5 版。折版。上品。 | Start bid 600 |
| 337 | 新中国 T110 100 套 2 版。70 分分开为 2 份大方连。上品。 | Start bid 700 |
| 338 | 新中国 T126 160 套 8 版。大部份全品。 | Start bid 400 |



339



340



341



342



343



344

港幣起拍價

- | | | |
|-----|--|-----------------|
| 339 | 新中国 T138 48 套 15 版。微黃。上品。 | Start bid 1,300 |
| 340 | 新中国 T140 84 套 3 版。及 T144 120 套 4 版。部份微黃。上品。 | Start bid 600 |
| 341 | 新中国 J172 150 套 3 版。及 T149 200 套 4 版。部份微黃。上品。 | Start bid 600 |
| 342 | 新中国 T 票大方連及版票。編連票大方連 1 批。上品。 | Start bid 350 |
| 343 | 新中国 T167 168 套 6 版。挺版。全品。 | Start bid 1,000 |
| 344 | 新中国編連 1993-10 336 套 15 版。全品。 | Start bid 1,300 |



345



346



347



348



349



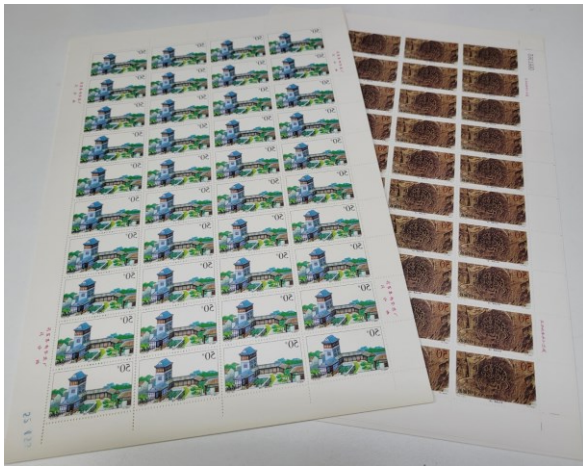
350



351

港幣起拍價

- | | | |
|-----|--|-----------------|
| 345 | 新中国编连 1995-6 850 套 17 版。全品。 | Start bid 1,000 |
| 346 | 新中国编连 1998-9 34 版。1998-17 65 版。1998-20 8 版。全品。 | Start bid 600 |
| 347 | 新中国编连 1998-13 4 版。1998-19 5 版。1998-26 7 版。全品。 | Start bid 400 |
| 348 | 新中国编连 1998-8 4 版。1998-15 4 版。全品。 | Start bid 300 |
| 349 | 新中国编连 1998-18 4 版。全品。 | Start bid 250 |
| 350 | 新中国编连 1998-3 2 版。1998-16 4 版。全品。 | Start bid 600 |
| 351 | 新中国编连 1998-22 5 版。全品。 | Start bid 350 |



352



353



354



355



356



357

港幣起拍價

352 新中国编连 1998-2 4 版。1998-21 5 版。全品。

Start bid 400

353 新中国编连 1998-28 6 版。全品。

Start bid 400

354 新中国编连 1998-7 4 版。1998-12 3 版。全品。

Start bid 250

355 新中国编连 1998-10 2 版。1998-10 1 版。全品。

Start bid 800

356 新中国编连 1998-23 5 版。1998-24 2 版。全品。

Start bid 600

357 新中国编连 1998-14 4 版。1998-27 4 版。全品。

Start bid 300

~ End of Auction ~

40th Public Auction (China - HK - Macau WeChat Live auction)

End of July 2024

~ Please contact HKPNC for consignment ~

TERMS OF SALE

1. Hong Kong Philatelic & Numismatic Company Limited (HKPNC) is acting as agent for the respective sellers of the lots in the auction. All lots are offered subject to a starting price, bids lower than starting price will not be accepted.
2. Estimates (starting price) have been given for all lots in this auction. They are meant to reflect our idea of the current market value of the item given its scarcity and condition.
3. The highest bidder acknowledged by HKPNC shall be the buyer. A buyer's premium of 15% shall be added to the hammer price of each lot.
4. Postal Bid Forms should be sent or faxed to be received by our office before 24:00 auction day. No 'UNLIMITED' or 'BUY BID' or 'AT BEST' 'HIGHEST' will be accepted. Local & oversea Clients may bid by fax, email, HKPNC's mobile APPS.
5. All lots will be sold to the highest bidder. Successful bidder will be awarded the lot only at a nominal advance over the next highest bid. Extension of lots should be noted on bid forms. For lots that requested extension, HKPNC will submit the item to a mutually acceptable expertise, providing that: 1) The lot will be paid for in full plus all charges for expertizing, including postage, mail registration, insurance and handling at the time of purchase, and 2) The expertise can provide a written opinion within 90 days of the auction date and will be delay for waiting more expert's opinion. All costs and charges for expertization are the sole responsibility and liability of the buyers. All cost for any fail opinion certification is the responsibility of the Vendor.
6. The lots offered in the auction catalogue can be inspected by potential bidders prior to the auction at public viewing as set forth in the auction catalogue. Viewers will be responsible for any damage caused by them in the viewing.
7. The buyer agrees to pay all shipping and handling costs. It is solely the buyer's responsibility to notify HKPNC of any special shipping instructions. In the case of tie bids or any other disputes arising, HKPNC's decision will be final.
8. All invoices are payable in Hong Kong dollars. Payment in any other currencies will not be accepted unless prior arrangements have been made, with such payment to include all additional bank charges. All foreign currency personal cheques and Euro cheques will not be accepted. A standard HK\$300 shipping/handling fee per shipment of purchase will be charged, there will be additional charges for carton lot shipments. Overseas buyers must furnish their own insurance during shipment.
9. Payment of lots is due within 20 days from the auction date, except in the case of postal or other bids that HKPNC executes on behalf of bidders do not present at the auction, such payment is due on presentation of HKPNC's invoice for the lots. Lots will not be given or sent to buyers until payment in full.
10. All invoices that are not paid within 30 days after the auction shall be subject to a 5% late fee and shall also bear interest at the rate of 1% per month from the date of the auction. If lots are not paid for in full within 30 days after the auction, HKPNC shall have the right to exercise one or more of the following rights and remedies: (a) to cancel the sale, (b) to resell the lots at public or private sale, with the defaulting buyer to be responsible for any loss from the resale and all costs and expenses in connection therewith, (c) to apply any amounts received from the buyer or owing to the buyer from HKPNC Auctions against the amounts owing to HKPNC Auctions, or (d) to sue the buyer for breach of contract. The buyer shall be responsible for all costs and expenses, including legal fees and collection costs, incurred by HKPNC in collecting on defaulted invoices and delinquent accounts.
11. All bidders will not be granted any return privileges. It is presumed that all floor bidders have inspected the lots prior to bidding. Therefore, lots purchased by floor bidders are sold "AS IS" and may not be returned. All lots containing more than two items may not be returned under any circumstances.
12. The bidder is responsible for any lots returned until received by HKPNC.
13. HKPNC's shall not be liable for any errors or omissions in executing instructions made by the bidder or seller. The bidder who bids in the auction agrees to accept and abide by all the foregoing terms and conditions of sale and personally guarantees payment in full.
14. The respective rights and obligations of the parties shall be governed and construed by Laws of Hong Kong

HKPNC 38th Public Auction (26 May 2024) Result

Lot#	Sold	15% (\$)	Lot#	Sold	15% (\$)	Lot#	Sold	15% (\$)	Lot#	Sold	15% (\$)	Lot#	Sold	15% (\$)	Lot#	Sold	15% (\$)
1	\$950	\$1,093	46	\$0	\$0	91	\$0	\$0	136	\$0	\$0	181	\$900	\$1,035	226	\$1,200	\$1,380
2	\$500	\$575	47	\$550	\$633	92	\$0	\$0	137	\$0	\$0	182	\$900	\$1,035	227	\$800	\$920
3	\$800	\$920	48	\$0	\$0	93	\$900	\$1,035	138	\$1,500	\$1,725	183	\$2,100	\$2,415	228	\$1,000	\$1,150
4	\$850	\$978	49	\$550	\$633	94	\$400	\$460	139	\$0	\$0	184	\$2,500	\$2,875	229	\$1,000	\$1,150
5	\$800	\$920	50	\$850	\$978	95	\$1,900	\$2,185	140	\$1,000	\$1,150	185	\$3,500	\$4,025	230	\$1,500	\$1,725
6	\$1,500	\$1,725	51	\$700	\$805	96	\$0	\$0	141	\$3,300	\$3,795	186	\$3,700	\$4,255	231	\$400	\$460
7	\$500	\$575	52	\$900	\$1,035	97	\$950	\$1,093	142	\$400	\$460	187	\$500	\$575	232	\$500	\$575
8	\$0	\$0	53	\$0	\$0	98	\$0	\$0	143	\$0	\$0	188	\$450	\$518	233	\$500	\$575
9	\$650	\$748	54	\$450	\$518	99	\$1,200	\$1,380	144	\$0	\$0	189	\$350	\$403	234	\$600	\$690
10	\$400	\$460	55	\$500	\$575	100	\$1,300	\$1,495	145	\$500	\$575	190	\$400	\$460	235	\$0	\$0
11	\$450	\$518	56	\$7,400	\$8,510	101	\$1,600	\$1,840	146	\$600	\$690	191	\$700	\$805	236	\$350	\$403
12	\$950	\$1,093	57	\$450	\$518	102	\$0	\$0	147	\$750	\$863	192	\$300	\$345	237	\$350	\$403
13	\$900	\$1,035	58	\$200	\$230	103	\$0	\$0	148	\$650	\$748	193	\$300	\$345	238	\$1,700	\$1,955
14	\$900	\$1,035	59	\$0	\$0	104	\$4,600	\$5,290	149	\$850	\$978	194	\$250	\$288	239	\$500	\$575
15	\$450	\$518	60	\$0	\$0	105	\$4,300	\$4,945	150	\$850	\$978	195	\$600	\$690	240	\$0	\$0
16	\$550	\$633	61	\$650	\$748	106	\$0	\$0	151	\$500	\$575	196	\$0	\$0	241	\$1,200	\$1,380
17	\$0	\$0	62	\$0	\$0	107	\$0	\$0	152	\$250	\$288	197	\$0	\$0	242	\$0	\$0
18	\$1,800	\$2,070	63	\$300	\$345	108	\$0	\$0	153	\$1,500	\$1,725	198	\$250	\$288	243	\$700	\$805
19	\$800	\$920	64	\$500	\$575	109	\$35,000	\$40,250	154	\$700	\$805	199	\$500	\$575	244	\$600	\$690
20	\$350	\$403	65	\$1,300	\$1,495	110	\$0	\$0	155	\$600	\$690	200	\$400	\$460	245	\$1,200	\$1,380
21	\$0	\$0	66	\$0	\$0	111	\$450	\$518	156	\$0	\$0	201	\$0	\$0	246	\$1,200	\$1,380
22	\$450	\$518	67	\$450	\$518	112	\$0	\$0	157	\$650	\$748	202	\$0	\$0	247	\$700	\$805
23	\$0	\$0	68	\$550	\$633	113	\$450	\$518	158	\$500	\$575	203	\$250	\$288	248	\$550	\$633
24	\$2,700	\$3,105	69	\$800	\$920	114	\$0	\$0	159	\$250	\$288	204	\$0	\$0	249	\$800	\$920
25	\$300	\$345	70	\$500	\$575	115	\$750	\$863	160	\$500	\$575	205	\$350	\$403	250	\$0	\$0
26	\$1,700	\$1,955	71	\$900	\$1,035	116	\$0	\$0	161	\$0	\$0	206	\$400	\$460	251	\$0	\$0
27	\$0	\$0	72	\$700	\$805	117	\$450	\$518	162	\$450	\$518	207	\$700	\$805	252	\$0	\$0
28	\$1,000	\$1,150	73	\$0	\$0	118	\$1,100	\$1,265	163	\$200	\$230	208	\$600	\$690	253	\$0	\$0
29	\$350	\$403	74	\$550	\$633	119	\$800	\$920	164	\$550	\$633	209	\$750	\$863	254	\$0	\$0
30	\$5,600	\$6,440	75	\$0	\$0	120	\$850	\$978	165	\$1,300	\$1,495	210	\$0	\$0	255	\$300	\$345
31	\$0	\$0	76	\$0	\$0	121	\$0	\$0	166	\$600	\$690	211	\$350	\$403	256	\$0	\$0
32	\$0	\$0	77	\$300	\$345	122	\$500	\$575	167	\$700	\$805	212	\$1,700	\$1,955	257	\$0	\$0
33	\$550	\$633	78	\$0	\$0	123	\$0	\$0	168	\$550	\$633	213	\$550	\$633	258	\$0	\$0
34	\$1,600	\$1,840	79	\$0	\$0	124	\$0	\$0	169	\$300	\$345	214	\$250	\$288	259	\$6,600	\$7,590
35	\$1,800	\$2,070	80	\$0	\$0	125	\$400	\$460	170	\$15,000	\$17,250	215	\$500	\$575	260	\$3,000	\$3,450
36	\$650	\$748	81	\$300	\$345	126	\$900	\$1,035	171	\$1,600	\$1,840	216	\$0	\$0	261	\$0	\$0
37	\$0	\$0	82	\$0	\$0	127	\$850	\$978	172	\$2,300	\$2,645	217	\$650	\$748	262	\$0	\$0
38	\$1,300	\$1,495	83	\$300	\$345	128	\$300	\$345	173	\$600	\$690	218	\$450	\$518	263	\$600	\$690
39	\$550	\$633	84	\$0	\$0	129	\$1,300	\$1,495	174	\$1,100	\$1,265	219	\$400	\$460	264	\$0	\$0
40	\$300	\$345	85	\$950	\$1,093	130	\$1,400	\$1,610	175	\$1,200	\$1,380	220	\$700	\$805	265	\$250	\$288
41	\$400	\$460	86	\$0	\$0	131	\$350	\$403	176	\$6,800	\$7,820	221	\$400	\$460	266	\$700	\$805
42	\$1,200	\$1,380	87	\$8,000	\$9,200	132	\$0	\$0	177	\$1,000	\$1,150	222	\$350	\$403	267	\$300	\$345
43	\$800	\$920	88	\$0	\$0	133	\$0	\$0	178	\$0	\$0	223	\$0	\$0	268	\$400	\$460
44	\$0	\$0	89	\$450	\$518	134	\$1,600	\$1,840	179	\$300	\$345	224	\$450	\$518	269	\$550	\$633
45	\$300	\$345	90	\$0	\$0	135	\$750	\$863	180	\$500	\$575	225	\$300	\$345			

HKPNC #39 Public Auction 23rd June 2024

Please bid on my behalf (up to the limits if necessary) for the following lots.

I have read and agree to the 'Terms and Conditions' in the catalog.

I UNDERSTAND THAT A **15% PREMIUM WILL BE ADDED TO THE 'HAMMER' PRICE.**

Name **Address**

Telephone **Fax** **E-mail**

Bank and commercial philatelic references

Signature _____ **Date** _____

(Unsigned bid forms will not be accepted.)

LOT NUMBER	MAX.BID HK\$	LOT NUMBER	MAX.BID HK\$

HK\$30 registered airmail shipping fee per shipment, additional charges for carton lot shipments.

Dispatch instructions **HKPO Express (\$250)** **Registered Airmail (\$30)**
 Office pick up

HONG KONG PHILATELIC & NUMISMATIC COMPANY LIMITED

Unit 3006, Trendy Centre, 682 Castle Peak Road, Lai Chi Kok, Kowloon, Hong Kong
Tel: 9213 5613 / 9339 2040 E-mail: info@hkpnc.com

網上拍賣平台。每項有背圖提供。
請瀏覽 auction.hkpnc.com

